



altaeuro FRAMELESS COLLECTION

US Cabinet Depot is a blend of cabinetry professionals from many different areas of the cabinet industry. This mix of knowledge and experience has allowed us to build a company that truly understands the needs of its customers. Our focus is on providing products that exceed our customers' expectations in quality, price and service.

Quality:

Our products are designed to the highest standards in style and function. We start by selecting only high quality raw materials, hardware, adhesives and finishes. This bundle of superior components is the first step to securing your long term satisfaction.

The second step is a state of the art manufacturing process which ensures consistent production across the board. We have worked diligently to cut out waste and eliminate bottle necks. New manufacturing technologies are quickly implemented as they become available to the industry. The result is streamlined and efficient production costs which support a very competitive sales price for our products.

- The final step is thorough inspections. Components are inspected for quality at the completion of each step of the manufacturing process. When the entire process is complete, each batch of product is compared with a control group to make sure it will match warehouse inventory perfectly. These quality standards were established so our customers have confidence in the consistent quality of our construction, color and finish.

Service:

We believe a product is only as good as the service that supports it. We spend a lot of time developing materials, processes and policies in order to make sure our customers are better served. The services we provide can be divided into three categories: supporting materials, order processing and customer service. Large strides have been made to ensure all of the pertinent information customers seek is readily available. Marketing materials are constantly being developed and distributed to help our customers educate their clientele. We understand that these are the sales tools required to successfully sell our product in your showrooms.

Our automated order processing system has allowed us to eliminate many unnecessary steps, significantly reducing our lead time. Orders placed online seamlessly flow through our inventory control and accounting systems.

We have a great team of experienced cabinet professionals ready to hear your concerns and answer your questions. Most importantly we listen to the input our customers give us and make sure your suggestions are addressed as we continually seek ways to better serve you. The goal is to establish a mutually beneficial relationship in which we can grow our businesses around.

Sample Doors - Framed

Capital Collection

Shaker



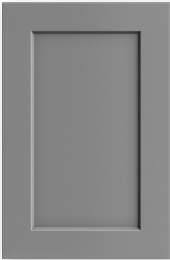
White



Antique White



Dove



Grey



Black



Honey

Shaker (cont.)



Cinder

Oxford



White



Sage

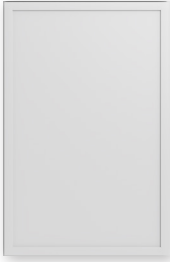


Mist



Toffee

Edgeline



White

Torrance



White

Casselberry



Antique White



Saddle

Capital Impressions Collection

Shaker



Navy

Sample Doors - Frameless

altaeuro Collection

Torino



White Pine



Grey Wood



Dark Wood

Verona



Pure Blanc



Midnight Navy

Palermo



Gloss White



Pictured: Torino Grey Wood

Marketing Tools



Capital Collection Sales Sheet
(50 Pack)



Capital Impressions Collection
Sales Sheet
(25 Pack)



altaeuro Collection Sales Sheet
(50 Pack)



Specification Manual

Our mini bases come with the exact hardware used in our framed and frameless cabinetry.



Framed Mini Base



Frameless Mini Base



Sample Door Bag
(Holds Up to 10 Doors)



Framed Merchandiser

Contact your
USCD Rep for
merchandising
solutions

Dealer Policies

- As an authorized US Cabinet Depot dealer, it is your responsibility to communicate our policies, product information, order information, claim information, etc. to your customer.
 - US Cabinet Depot will not provide any details to dealer's customer(s) at any time nor will we be held responsible for any inaccurate information provided by dealers and their associates.**
- Any dealer selling US Cabinet Depot products online must complete a the Online Retail Acknowledgment form and be approved **prior** to offering it for resale.
 - If online resale is approved by US Cabinet Depot, you are only allowed to resale on the website specified at the time of approval. Resale on additional websites will require additional approval from US Cabinet Depot.
- Prior to publicizing your selling price, all dealers must adhere to the minimum advertised price as confirmed with your US Cabinet Depot representative.
- US Cabinet Depot reserves the right to monitor and modify dealer accounts as it applies to the company standards, (i.e. active status, eligible discounts, etc).

Order Processing & Payment

- 5
- All orders from US Cabinet Depot approved dealers will be accepted online only.
 - Large quantities of a single item or larger orders may trigger a review process that will require US Cabinet Depot approval prior to proceeding.
 - Full Payment is required before an order will be processed.** (This includes backorders and approved written add-ons).
 - Payment can be made by Credit Card, Debit Card, or PayPal.
 - US Cabinet Depot cannot be held liable for payment methods that are not owned and/or managed by the dealer.
 - Any order, or change, that is unable to be completed on the website, must be submitted in writing to info@uscabinetdepot.com. Such requests exclude the order(s) from standard lead times.
 - Once an order is in process, no changes can be made. Additional items can be processed online as a new order.

Shipped Order Lead Time

- Flat-pack orders are processed and shipped within 3 full business days
- Assembled orders are processed and shipped within 5 full business days.

Warehouse Pick Up Order Lead Time

- Flatpack warehouse pickup orders are processed and made available for pickup within 3 full business days.
- Assembled warehouse pickup orders are processed and made available for pickup within 5 full business days.

- Rush services are available for both flat-pack and assembled orders for an additional fee as calculated on the website. (All orders with rush services are subject to total item quantity review.)
The "Rush Fee" only applies to warehouse processing time and does not apply to transit time to your destination.
 - **Flat-Pack**
 - Same-day warehouse pickup is available for flat-pack orders placed by 12:00 PM (local warehouse time) and requires a minimum 3 hour processing time.
 - Same-day shipping is available for flat-pack orders placed by 12:00 PM (local fulfilling warehouse time). Orders placed after 12:00 PM will be processed the following business day.
 - **Assembled**
 - Rush services for assembled orders are processed and available for warehouse pickup or shipping within 3 business days.
 - US Cabinet Depot reserves the right to activate or deactivate assembly rush services at the company's discretion.
 - Rush services are unavailable for discontinued lines. Combined orders subject to refund of rush fee.
 - Rush services must be selected at the time of checkout.
- "Day One" starts on the next full business day after the order is placed.
- Cancellations after the order is picked will be subject to a 10% processing fee.
- Cancellations made after an order has been loaded onto a carrier's truck, or picked up, are subject to a 20% restocking/processing fee.

6

Backorders

- US Cabinet Depot reserves the right to activate or deactivate backorders for certain styles, colors, or SKUs at the company's discretion.
- Backorder shipping fees are based on the estimated size of the order and are subject to change based on market rates and services.
- The backorder shipping fee only covers one shipment, the backorder will not be released until all items on the backorder have been replenished in the fulfilling warehouse.

Assembly & Modifications

- Assembly and limited modifications are available for warehouse pickup and freight shipped orders (from select warehouses) for additional labor and shipping fees as calculated by the website.
- A limited number of modifications are available on framed **assembled items only**, including:
 - Increased Depth
 - Decreased Depth

- Prep for Glass: Route Door(s) & Finish Interior
- Double Oven Conversion
- Modifications exempt the entire order from normal lead times and can take up to an additional 5 business days for completion.

Shipping & Delivery

- All LTL freight orders are packaged in individual boxes, placed on a pallet, shrink-wrapped, and strapped.
- All LTL freight shipping charges are calculated online at the time of checkout.
- US Cabinet Depot reserves the right to fulfill orders between multiple shipments from different distribution facilities, without prior notification to the customer and with no additional cost applied.
 - If a customer requests changes to their selected shipping method after the time of checkout additional charges may apply.

LTL Shipping

- There is a 2-5 business day standard transit time with LTL carriers. **Please account for at least one extra day for residential deliveries and deliveries requiring a scheduled delivery appointment.**
- **Shipping charges must be paid for when your order is placed online.** (Orders exceeding standard LTL sizes are subject to additional fees for Full Truckload shipping).
 - This can be, but not always, identified by a \$9999 shipping cost that is revised after your order has been reviewed for shipping.
- You will receive a tracking number by email the day after the order has shipped.
- All destinations must be tractor/trailer accessible, or Limited Access fees will be applied as assessed by the website.
- For residential deliveries and deliveries requiring an appointment, the freight company **will reach out to the ship-to contact (consignee)** 24 hours in advance to schedule the delivery (usually a 3-4 hour window).
- **Shipping charges cover one delivery attempt.** The customer is responsible for any additional shipping and handling charges for delivery failure due to customer circumstances.

LTL Delivery Policies

- The driver is only responsible for placing the pallet on the ground for deliveries that had lift gate services selected at the time of check out.
- Address classifications are based on city zoning, therefore it is possible to have a commercial property in a residential area. In this case the delivery would be considered residential, and subject to the residential delivery fees and conditions.

- A responsible party must be present to inspect, inventory, and sign off on the delivery.
 - You **MUST** notate if the number of pallets delivered does not match the number listed on the driver's delivery receipt copy.
 - Careful inspection of packaging conditions is vital to file freight claims. Any visible damages must be noted on the paperwork when signing for the delivery, as well as documented with photos. Even if you are not sure if the contents inside contain damages due to the exterior's condition, you **MUST** indicate on the delivery receipt to be able to claim concealed damages in the future.
 - Do **NOT** reject damaged items. The delivery should be accepted, with documentation of the damage, and a claim should be filed online. SEE IMPORTANT NOTES IN MISSING AND DAMAGED ITEMS SECTION TO FOLLOW.
- Regional delivery services are available in select markets. Rates and delivery services vary by market.

Warehouse Pick Up Orders

- Orders must be picked up within **10 business days** of receiving the ready for pick-up email notification.
- After ten business days has passed, storage fees will begin to accumulate as follows:
 - \$25/day per open order
 - Fees will accumulate up to two weeks maxing out at \$250
 - Five weeks after the ready for pickup notification has been sent, the order will be returned back to inventory and refunded less the max \$250 and a 10% restocking fee.
- If storage fees are applied to your order(s), the order(s) will be released for pickup after any fees assessed are paid for in full.
- Orders placed for warehouse pick up are not palletized, wrapped, or strapped for shipping purposes.
 - If you are sending a delivery service that requires secure palletizing of products the order will incur additional packaging & labor fees and must be approved by US Cabinet Depot prior to pick up.
- For liability purposes, US Cabinet Depot will not help load warehouse pick-up orders without approval from the pick-up party.
- Orders must be picked up in safe and compatible condition in accordance to the product and environment. US Cabinet Depot cannot be held liable for damage that occurs due to improper weather or equipment conditions.
- US Cabinet Depot will not accept transit damage claims on warehouse pick-up orders that are picked up and/or shipped with delivery services contracted out at the dealer's discretion.

Replacements for Missing or Damaged Items (Including Concealed Damage)

- US Cabinet Depot has the final determination of resolution for any manufacturer warranty claims submitted. Solutions should be discussed with US Cabinet Depot prior to being promised to the end customer.
- Blemishes or other damages not impacting the structural integrity of a cabinet will not warrant a full cabinet replacement. US Cabinet Depot reserves the right to provide alternative products or components as solutions.
- Freight claims for obvious damage or shortage can only be accepted **when indicated on the delivery receipt.**
- Freight damage claims must be filed within 5 business days. No claims will be allowed without the proper paperwork noting the damage at the time of delivery.
- To file a claim for damage or a shortage, please log into our website and use our damage claim module.
- The following must be included to process the claim:
 - Order number
 - Buyer's name
 - Shipping address for replacements
 - Brief description of damage or shortage, including item numbers and/or parts
 - Pictures of the damaged packaging and product are required to be eligible for full replacement.
- Upon receipt of the damage claim, we will review the request within 48 business hours. Replacements will then be shipped out within 24-48 hours.
- Expedited shipping service is **NOT** available for replacements and/or parts.
- All damages must be documented and reported upon opening the boxes.
- Missing items must be reported within **two weeks** from delivery.
- Concealed damages must be reported within **one month** from delivery.
- Items that have been assembled and installed **cannot** be claimed as damaged.
- **US Cabinet Depot cannot be held responsible for any labor costs accrued during the installation of any of its products sold via any of its channels of distribution. This includes, but is not limited to, items that may be flawed or have become damaged in transit.**

Return Merchandise Authorizations (RMA)

- All returns must be authorized by US Cabinet Depot prior to return shipment.
- For authorization, please send an email request to support@uscabinetdepot.com.
- Returns must be received by US Cabinet Depot within 30 days of purchase.
- All items must be returned in original, unopened packaging, therefore **NO RETURNS ON ASSEMBLED CABINETS.**
- No returns on trims, mouldings, fillers, panels, or sales tools.
- No returns on discontinued cabinet styles.
- QUALIFYING returns will incur a 20% RESTOCKING FEE.
- The customer is responsible for setting up and covering all return shipments.
- Any returned product DEEMED UNSELLABLE **WILL NOT RECEIVE CREDIT.**

Marketing Policies

- US Cabinet Depot cannot be held liable for applicable marketing costs for marketing our products.
- Private labeling is done at the dealer's discretion.
- The use of any images and sales materials in your private label marketing can be released by emailing info@uscabinetdepot.com.

10

Display Policy

US Cabinet Depot is happy to partner with our displaying dealers. We now offer a 50% credit on US Cabinet Depot cabinetry products that are ordered and installed in a dealer's showroom. Cabinetry can only be for display, not for functional use. Desks, bathrooms, breakrooms, etc. are not eligible for rebate. Each dealer can earn up to a total of \$2,500 in credits. The display items must be ordered online, paid in full, and pictures sent to info@uscabinetdepot.com of showroom installation before a credit can be released. Please note: Drop shipped items do not qualify as part of the Display Program.

Third-Party Design Programs

US Cabinet Depot does not guarantee the accuracy of any third-party design software. This includes (but is not limited to) Design Flex (2020 Design) and ProKitchen Design softwares.

Please refer to your dealer portal for accurate information on US Cabinet Depot product specifications and pricing.

Construction

Are your cabinets constructed with solid wood?

Framed Capital Collections

- *Doors & Drawer Fronts* -
 - All stained finished doors, drawer fronts, and frames are constructed from 3/4" solid Birch hardwood. Our Casselberry Saddle style has a solid birch center panel, while our stained Shaker Cinder, Shaker Honey, Oxford Mist & Oxford Toffee have a veneered MDF center panel.
 - Our painted styles feature an all HDF door: Shaker White, Shaker Grey, Shaker Dove, Shaker Antique White, Shaker Navy, Shaker Black, Edgeline White, Oxford White, Oxford Sage, Torrance White, and Casselberry Antique White.
- *Cabinet Box* - Our framed cabinet boxes are constructed from solid Birch hardwoods and furniture grade plywood. All materials are CARB2 compliant for standard US restrictions for formaldehyde emissions.
- *Drawer Box* - Our framed cabinetry features four-sided drawer boxes constructed from 5/8" thick solid hardwood, dovetail joints, and a fully captured 3/8" thick plywood floor.

Frameless (Full Access) altaeuro Collection

- *Doors & Drawer Fronts* -
 - Our Torino style features a fully edge banded, thermofused textured melamine over engineered wood, with a matching back.
 - Our Palermo style features a fully edge banded, high-gloss PET laminate over engineered wood, with a matte melamine back.
 - Our Verona style features a five-piece HDF painted door.
- *Cabinet Box* - Our frameless cabinet boxes are constructed using MDF and furniture grade plywood. All materials are CARB2 compliant for restricted formaldehyde emissions.
- *Drawer Box* - Our frameless cabinetry comes standard with our altamax drawer box. The altamax drawer box is a four-piece construction box complete with 1/2" thick metal sides and 5/8" thick thermofused melamine engineered wood back and floor.

How is the interior of the cabinet finished?

Framed Capital Collection

- Our framed cabinetry comes standard with UV coated natural interiors. Glassdoor "GD" cabinets have interiors that are painted or stained to match the exterior.

altaeuro Full Access Frameless

- Our altaeuro cabinets feature a grey linen thermofused melamine in and out.

Are your cabinets CARB2 certified?

Yes, all US Cabinet Depot products are 100% in compliance with CARB Phase 1 & CARB phase 2 defined guidelines of composite wood products.

Are your cabinets strong enough to support a granite countertop?

Our plywood core construction for all of our cabinets ensures the strength required to support granite, concrete, or any other countertop material that you may select. No additional cabinet reinforcement is required.

Do your cabinets have soft-close doors and drawers?

Soft-close doors and drawers are standard on all of our current cabinet collections (excludes select discontinued styles).

Is a finished panel required for exposed cabinet ends?

Framed Capital Collection

- No, all of our framed cabinets come with finished exteriors.

altaeuro Full Access Frameless

- altaeuro features a standard grey linen thermofused melamine exterior, so panels will be needed to finish the exposed ends.

How much weight can the cabinet drawers hold?

Framed Capital Collection

- Our framed cabinet drawers have a weight capacity of 70 lbs.

altaeuro Full Access Frameless

- Our altamax drawer boxes have the following weight capacities:
 - K-height (5") 88 lbs
 - C-height (6-¾") 132 lbs.

12

Do you sell paint color or stains that match the finishes of the cabinetry you offer?

We do not carry the paint color or stains to sell direct but we have partnered with Sherwin Williams for easy access to purchase our finishes. Simply visit a Sherwin Williams in your area, let them know you are interested in a customer paint color or stain from their National Accounts database under the profile name 'BGI'. Once the store associate has accessed the account successfully, provide them with the paint color/stain you are looking for.

Retail locations can accomplish matching any paint color for your projects however, paint color/stains are only recommended for smaller items such as trims & mouldings. For an accurate match for larger items, you will need to contact a Sherwin Williams Professional Coatings Group.

Ordering

What forms of payment do you accept?

We accept all major credit cards (Visa, American Express, MasterCard, and Discover), debit card & PayPal.

How can I check the status of my order?

You can view the progress of your orders by logging onto your account and selecting 'My Order' under the 'My Account' dropdown menu. The order status will be displayed next to your order as well as any tracking information if the order has shipped.

Do you offer credit terms?

We currently do not offer any sort of credit terms to our customers. All orders must be paid in full prior to processing and shipping any orders.

What is your return policy?

We do accept returns in certain circumstances. Please see the 'Return Merchandise Authorizations (RMA)' section of our Terms & Conditions for details.

Delivery

How do you ship your cabinetry?

Most orders will be shipped on a pallet via an LTL (Less than Truckload) carrier. Some smaller items may ship through a small parcel carrier.

How long will it take to receive my cabinets?

Flat-Pack Orders

- Flat-pack orders are processed and shipped out of our facilities within 3 full business days depending on the service chosen during checkout. Transit time to your location can vary from 1-6 business days depending on your location and the services required at delivery. (Backorders are exempt from normal lead times.)

Assembled Orders

- Standard assembled orders are processed and shipped within 10 full business days. Transit time to your location can vary from 1-6 business days depending on your location and the services required at delivery. (Backorders and modification orders are exempt from normal lead times.)

What if my delivery includes damaged cabinets?

If your order is received damaged, please notate any damages with the freight company on the delivery receipt when accepting the delivery and take photos of the damaged items. Most importantly, do not refuse the shipment. Submit a claim online with the photos of the damages or send them immediately to support@uscabinetdepot.com. US Cabinet Depot will review and replace damaged pieces in a timely manner.

Limited Lifetime Warranty

Brothers Global Inc. warrants to the original consumer purchaser that US Cabinet Depot cabinetry, door hinges, and drawer glides will be free from defects in material and workmanship under normal use and service for the lifetime of the product (Proof of Purchase is required). This warranty is not transferable and only applicable to product used for residential purposes. Representatives of US Cabinet Depot do not have the authority to change or enlarge this warranty.

This warranty does not cover normal wear and tear, damage or defects caused by accidents, misuse, abuse, or lack of necessary maintenance; nor does it cover alteration, modification, improper installation, improper handling / storage, environmental conditions, nor any labor expenses.

Brothers Global Inc., at our option, may elect to repair or replace with a functionally equivalent product any US Cabinet Depot product covered by this warranty. Some replacement parts are subject to availability and may differ from original parts received. Return of defective product may be required for a replacement to be issued. Repair parts or replacement parts are at the expense of Brothers Global Inc., but customer shall bear all other expenses. These expenses may include, but are not limited to, cost of removal and re-installation of product, labor expenses, etc.

In alignment with the inherent variability found in wood products, we deeply value and embrace the unique characteristics present in each piece of wood. Our recognition and celebration of wood's natural beauty encompass its inherent diversities in color, grain pattern, and direction, all of which contribute to its aesthetic charm without compromising its quality. Additional environmental factors, including but not limited to artificial/natural light, moisture, cleaners, smoke, etc, may cause darkening or mellowing of a cabinet over time. This is a natural process and can be expected. It's imperative to highlight that while we stand behind the integrity of our products, expected variations in color, grain, and aging are not indicative of manufacturing defects and will not prompt a replacement.

Therefore, we meticulously assess color warranty claims pertaining to cabinet front exteriors, excluding the referenced aging or environmental damage, and honor genuine discrepancies in color resulting from manufacturing error, which are not intrinsic to wood, and are reported within the stipulated timeframe outlined in our Terms and Conditions. Please note that variations in the natural wood color, pattern, grain, and direction within the cabinet's interior and not exposed after proper and intended installation do not warrant cabinet or parts replacement.

Some of the cabinet lines feature a glazed finish which accentuates the door and drawer front profiles. This glaze is hand applied over a stain or paint and may, due to the nature of application, consist of random drips, runs, etc. As glazing is a hand applied process, there will be variations in color and appearance from door to door and cabinet to cabinet. This is not considered a defect and is considered normal with hand applied finishes. It is the nature of wood to expand and contract to varying degrees depending on climate conditions. As a result, cabinet lines with painted surfaces may show fractures in the paint at joints. This is normal and is not considered a defect.

This warranty is valid only in the United States of America and Canada and is not transferable. All implied warranties are limited in duration to the shorter of the period provided by law or the period of this warranty. To the extent permitted by law, this warranty excludes special, incidental, or consequential damages. Some states do not allow the exclusion or limitations of incidental or consequential damages or limitations on how long an implied warranty lasts, so the above limitations or exclusions may not apply to you. This warranty gives you specific legal rights; you may have other rights which vary from state to state. To exercise this warranty, please contact the US Cabinet Depot supplier from whom you purchased the product. Report, in writing, to support@uscabinetdepot.com all defects claimed and include proof of purchase documentation.

TORINO

(*Specifications subject to change without notice)



**WHITE PINE
(TWP)**



**GREY WOOD
(TGW)**



**DARK WOOD
(TDW)**

- Frameless Full Access Construction
- Horizontal Textured Melamine Woodgrain Engineered Wood Slab Front with Matching Back
- Universal 18mm Plywood Composite Cabinet Box with a Grey Linen Thermofused Melamine Inside & Out
- **altamax** Full Extension Soft-Close Orion Grey Drawer Box
- **optishelf** Full Depth 18mm Adjustable Shelf with Full Edge Banding
- Hettich Sensys Adjustable 110° Soft-Close Hinges
- **easylevel** Leg System

VERONA

(*Specifications subject to change without notice)



PURE BLANC
(VPB)



MIDNIGHT NAVY
(VMN)

- Frameless Full Access Construction
- Five Piece Painted HDF Door
- Universal 18mm Plywood Composite Cabinet Box with a Grey Linen Thermofused Melamine Inside & Out
- **altamax** Full Extension Soft-Close Orion Grey Drawer Box
- **optishelf** Full Depth 18mm Adjustable Shelf with Full Edge Banding
- Hettich Sensys Adjustable 110° Soft-Close Hinges
- **easylevel** Leg System

PALERMO

(*Specifications subject to change without notice)

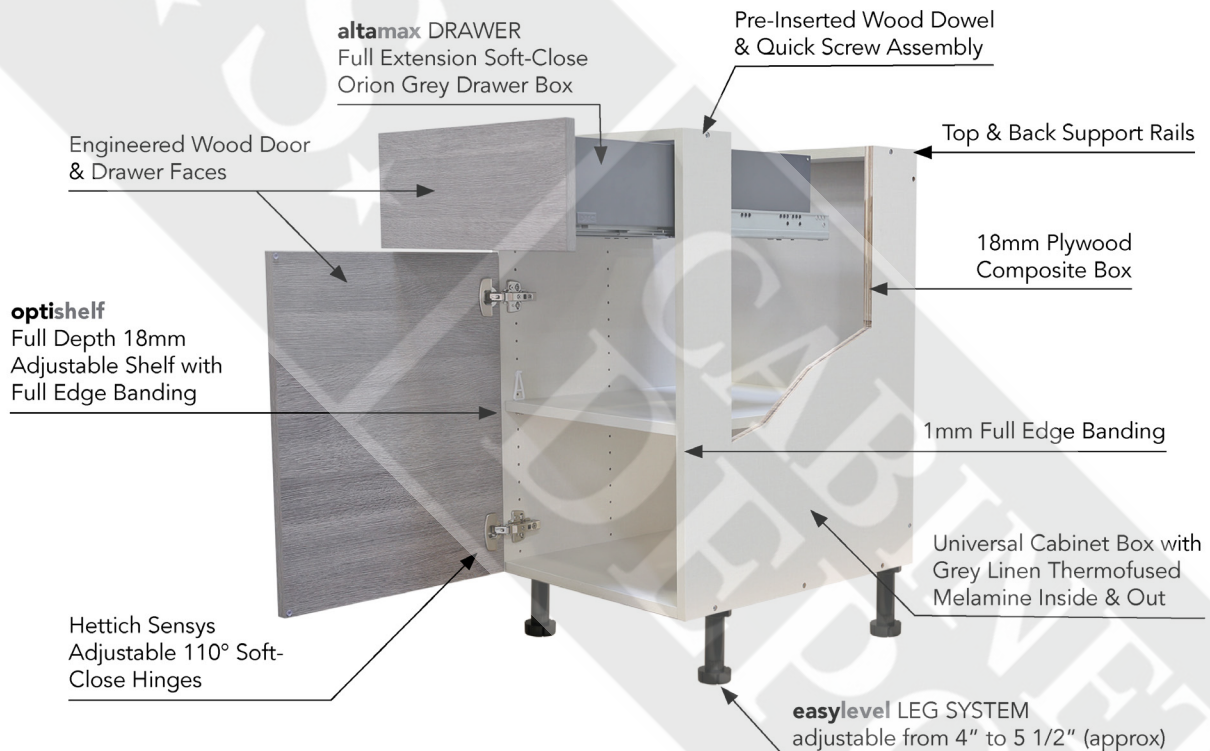


**GLOSS WHITE
(PGW)**

- Frameless Full Access Construction
- High Gloss PET Laminate Engineered Wood Slab Front With White Melamine Back
- Universal 18mm Plywood Composite Cabinet Box with a Grey Linen Thermofused Melamine Inside & Out
- **altamax** Full Extension Soft-Close Orion Grey Drawer Box
- **optishelf** Full Depth 18mm Adjustable Shelf with Full Edge Banding
- Hettich Sensys Adjustable 110° Soft-Close Hinges
- **easylevel** Leg System

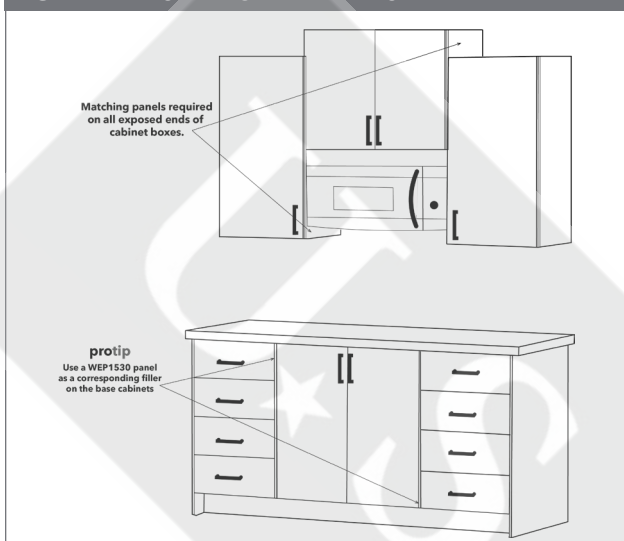
CONSTRUCTION SPECIFICATIONS

(*Specifications subject to change without notice)



18

FIG 1.1: FINISHED SIDE PANELS



Our **altaeuro** frameless cabinet boxes feature a universal grey linen box color in and out. When designing with **altaeuro**, a 3/4" panel is required anytime there is an exposed end. Remember to also use a panel next to appliances or when varying cabinet heights are used.

protip - To align the wall and base cabinets, use a WEP1530 (cut in half) as a filler on the base cabinets to correspond with the panels on the wall cabinets. See FIG 1.1

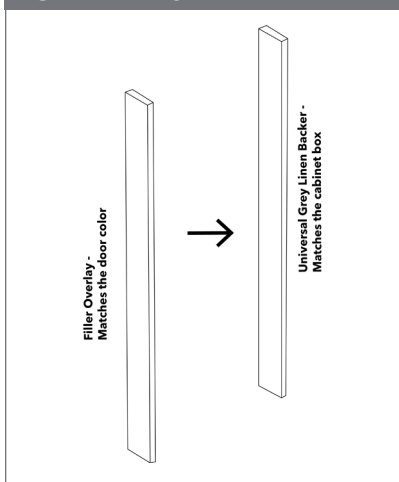
Frameless side panels are oversized and designed to be trimmed down in order to come flush with the door front, giving an inset appearance.

When using in an island or peninsula application, the finished panel should be flush with the back panel and door/drawer front. See FIG 1.2

FIG 1.2: FINISHED SIDE PANELS



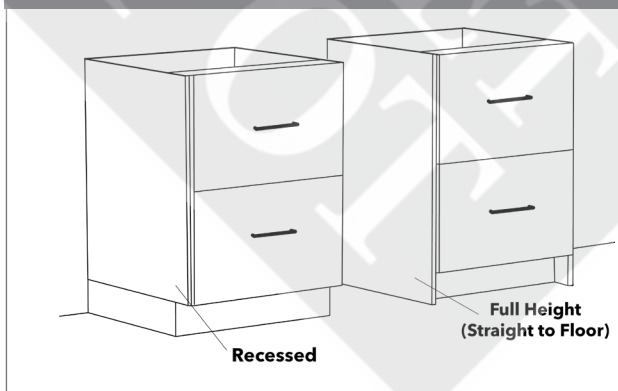
FIG 2: FILLERS



Our **altaeuro** fillers include a backer and separate front overlay piece. The backer is the same grey linen color as the cabinet box, and the overlay filler matches the door material. See FIG 2

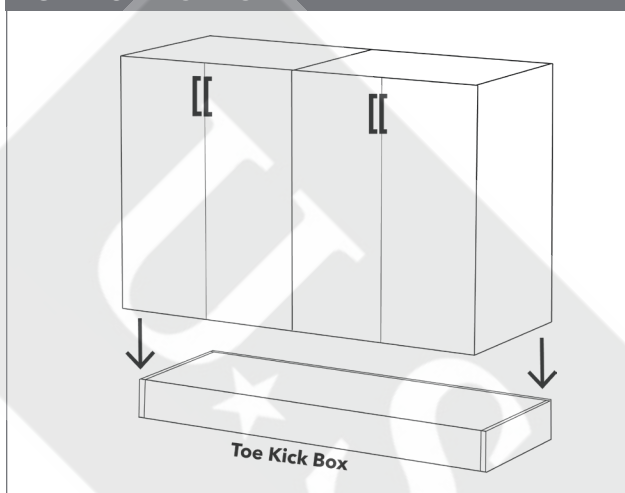
Frameless base end panels can either be installed with a recessed 4-1/2"H toe kick, or they can be used at full height and placed directly onto the floor. See FIG 3

FIG 3: END PANEL INSTALLATION TYPES



*To maintain the contemporary style of our **altaeuro** line, we offer Wall Easy Reach cabinets and a full range of Blind Corner cabinets as a clean-lined alternative to a diagonal corner.

FIG 4: TOE KICK BOX



When designing islands and peninsulas, it is not recommended to use the adjustable legs at the base of the cabinetry, as this can cause slipping. To ensure stability, a **toe kick box** can be secured to the floor, then the cabinets can be attached to the toe kick box frame. See FIG 4

Our **altaeuro tall cabinets** feature a 72"H standardized box. To reach the desired overall height of either 84, 89 or 94"* , a wall cabinet can be stacked on top of the tall utility box.

Our 24" deep wall cabinets are available in heights of 12, 18 or 23". See FIG 5

FIG 5: UTILITY CABINETS

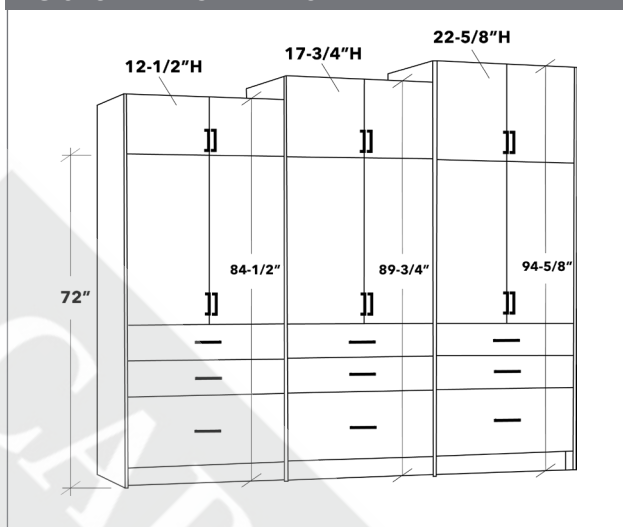
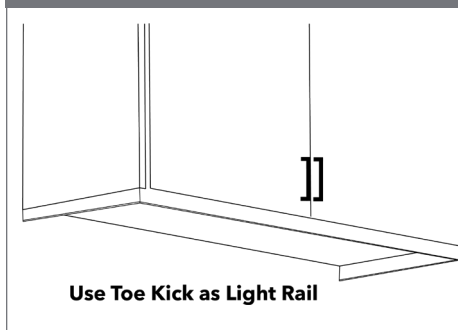


FIG 6: LIGHT RAIL

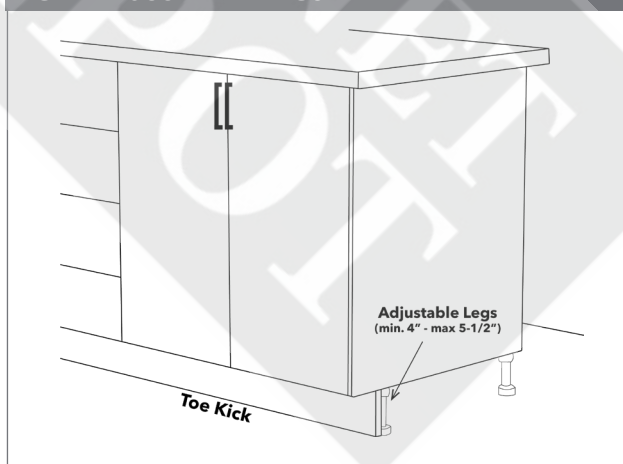


To construct a light rail, utilize toe kick molding with the light strip tucked behind.

The toe kick can be cut down to the desired length and height. See FIG 6

altaeuro base cabinets are designed without an integrated toe kick. The cabinets come with adjustable legs, and the toe kick can be attached onto the front of the legs. See FIG 7

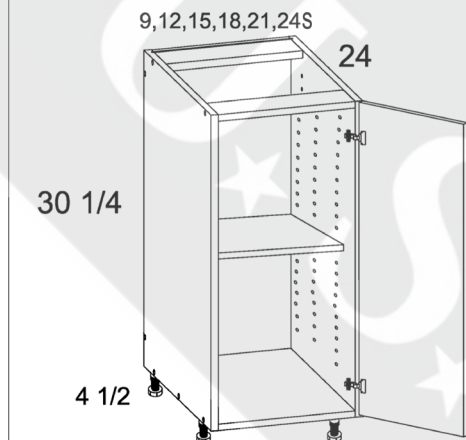
FIG 7: ADJUSTABLE LEGS



*Refer to specifications for exact heights and depths, as **altaeuro** does not use standard sizes on most cabinets, fillers and panels.

PRODUCT SPECIFICATIONS

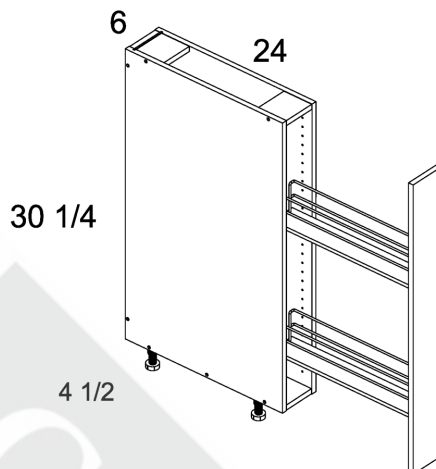
Full Height One Door Bases



MODEL

BT9FH
B12FH
B15FH
B18FH
B21FH
B24SFH

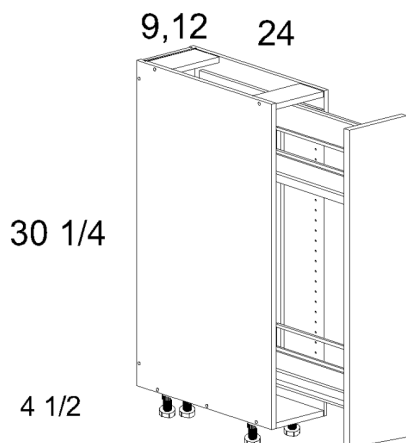
Base Rollout with Basket Pullout



MODEL

BPO6FH

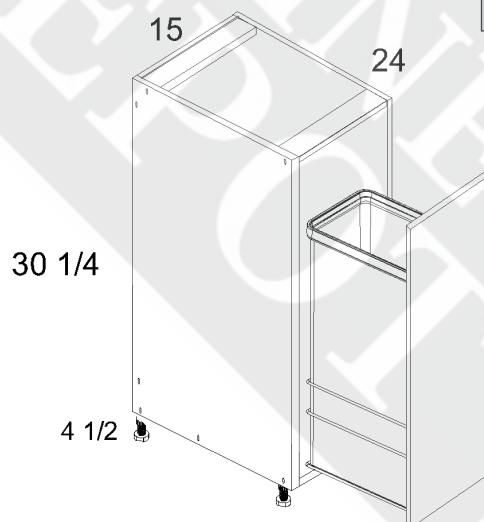
Base Rollout with Tray Pullout



MODEL

BPO9FH
BPO12FH

Full Height Door Base Cabinet with Single Trashcan

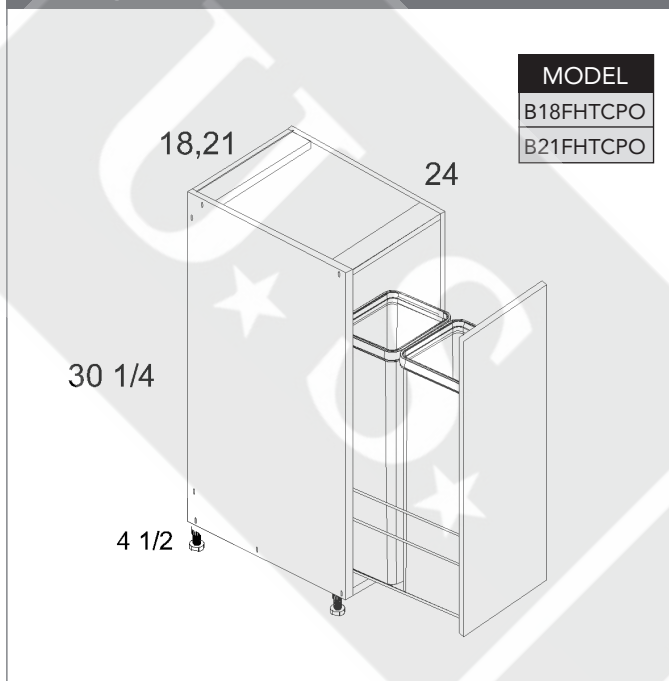


MODEL

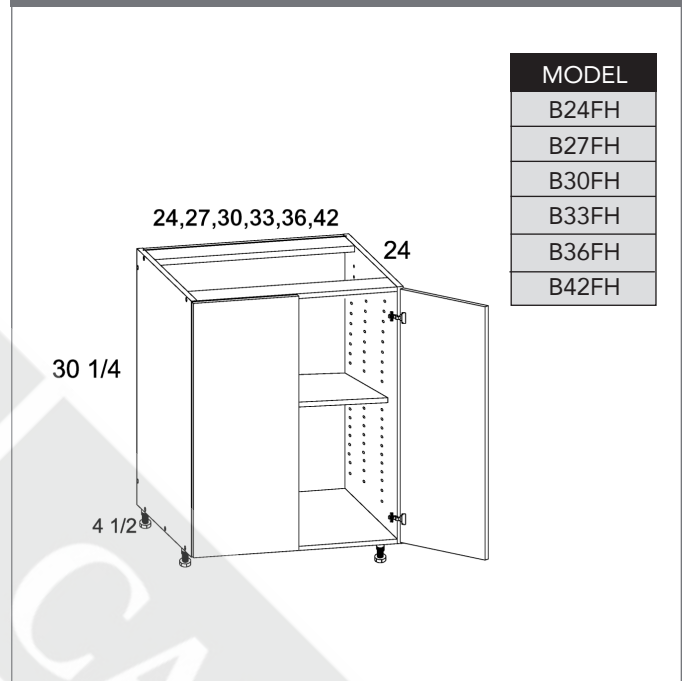
B15FHTCPO

PRODUCT SPECIFICATIONS

Full Height Door Base Cabinet with Double Trashcan

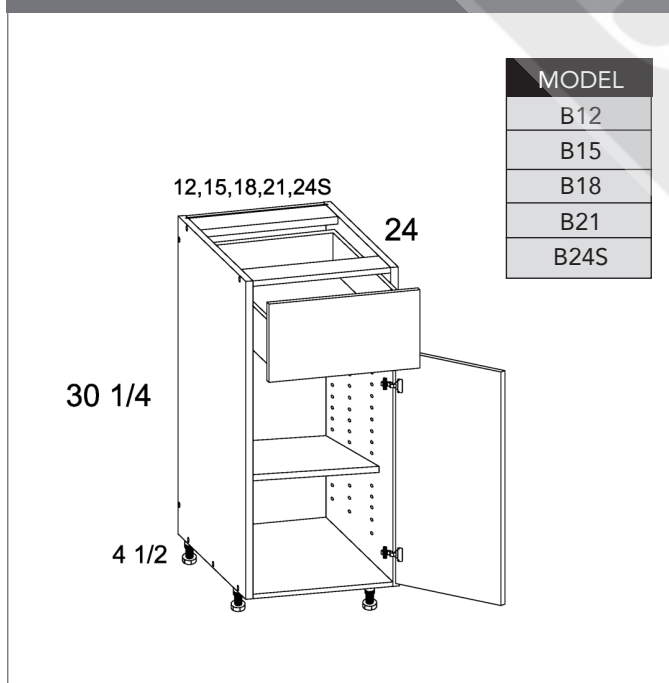


Full Height Two Door Bases

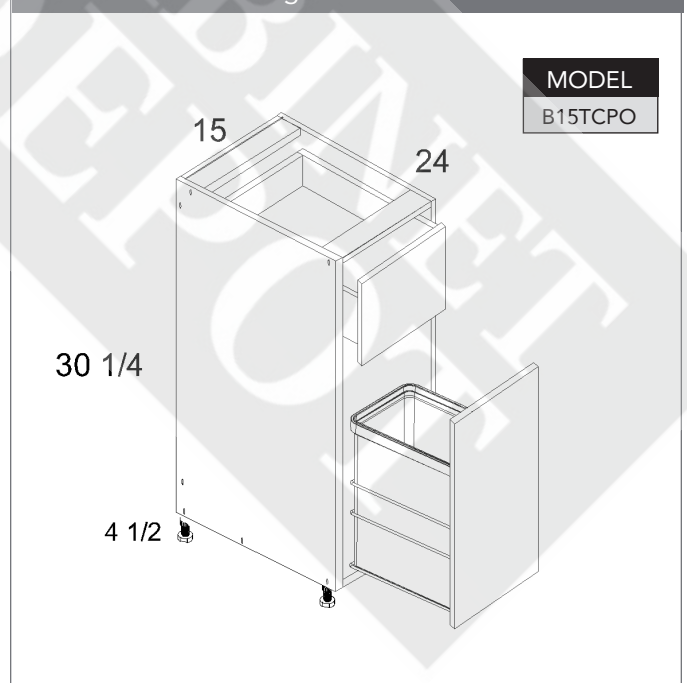


22

One Door One Drawer Bases

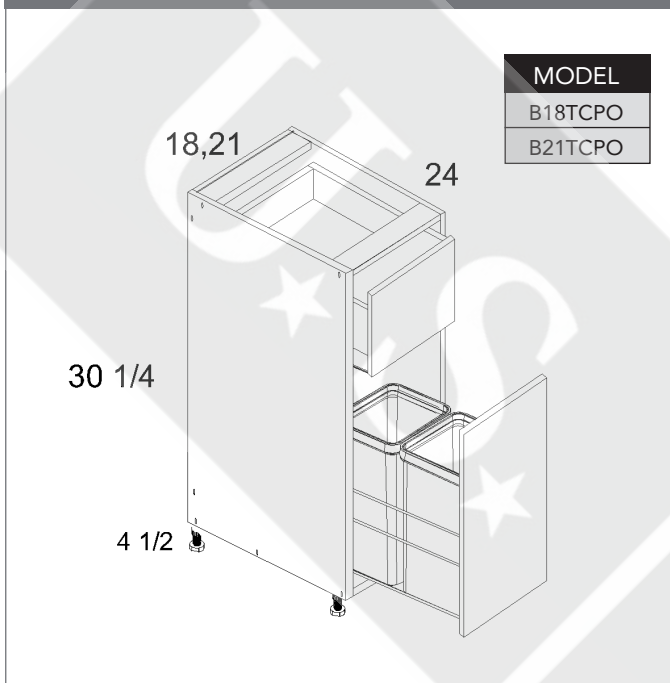


Base Cabinet with Single Trashcan

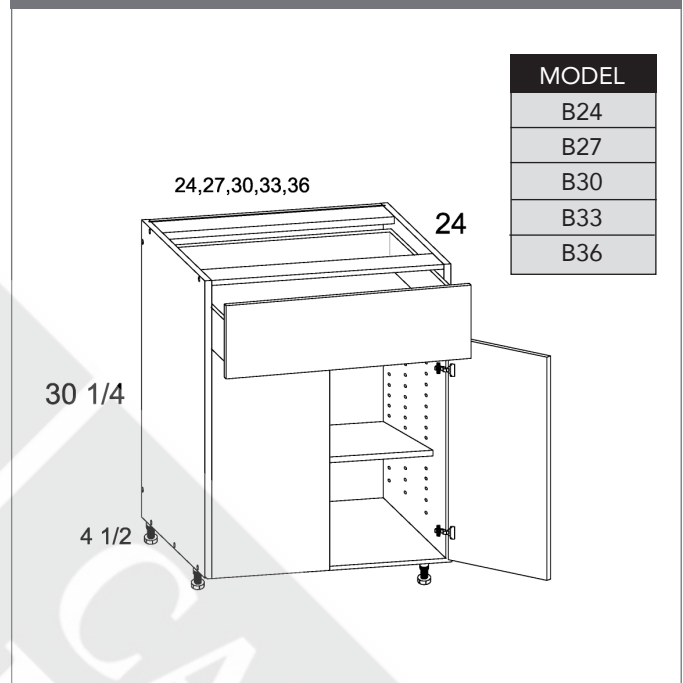


PRODUCT SPECIFICATIONS

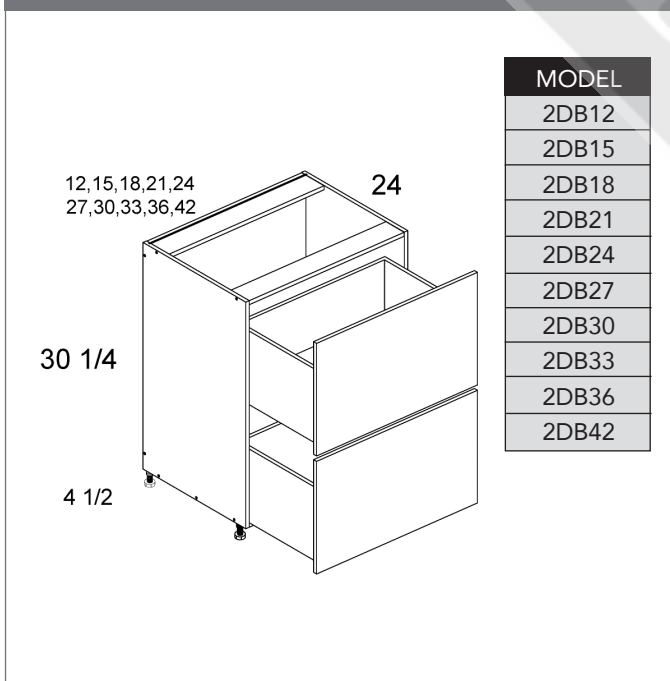
Base Cabinet with Double Trashcan



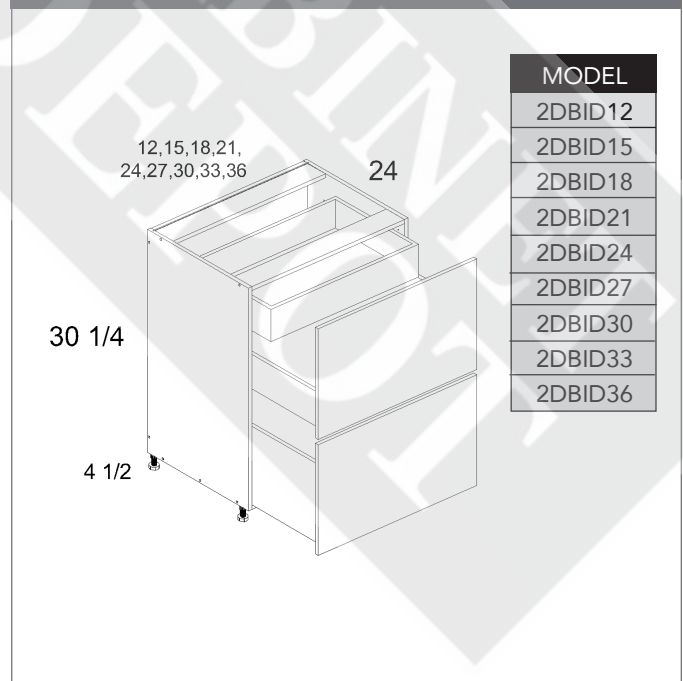
Two Door One Drawer Bases



Two Drawer Bases

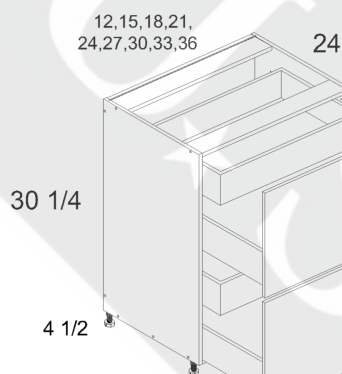


Two Drawer Bases with One Inner Drawer



PRODUCT SPECIFICATIONS

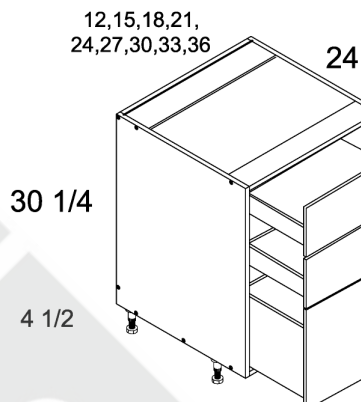
Two Drawer Bases with Two Inner Drawers



MODEL

2DB2ID12
2DB2ID15
2DB2ID18
2DB2ID21
2DB2ID24
2DB2ID27
2DB2ID30
2DB2ID33
2DB2ID36

Three Drawer Bases

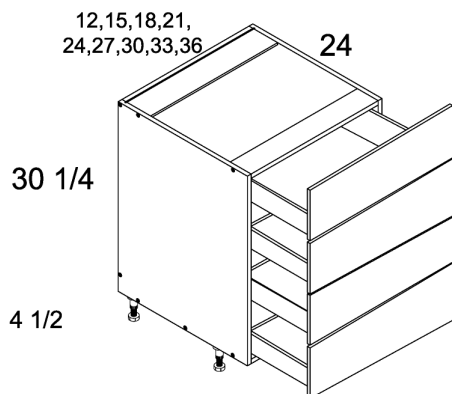


MODEL

3DB12
3DB15
3DB18
3DB21
3DB24
3DB27
3DB30
3DB33
3DB36

24

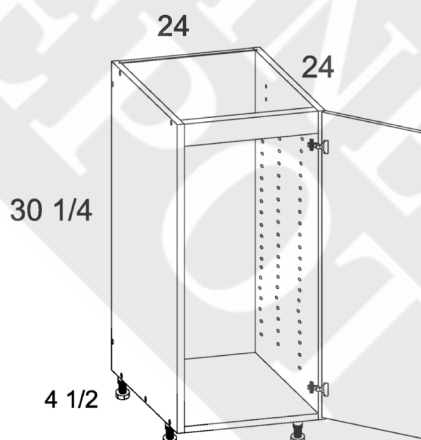
Four Drawer Bases



MODEL

4DB12
4DB15
4DB18
4DB21
4DB24
4DB27
4DB30
4DB33
4DB36

Full Height One Door Sink Bases

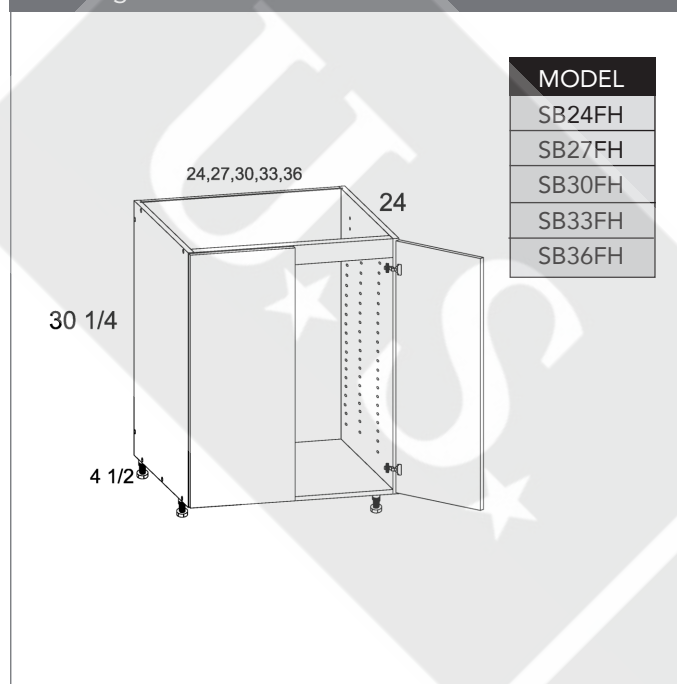


MODEL

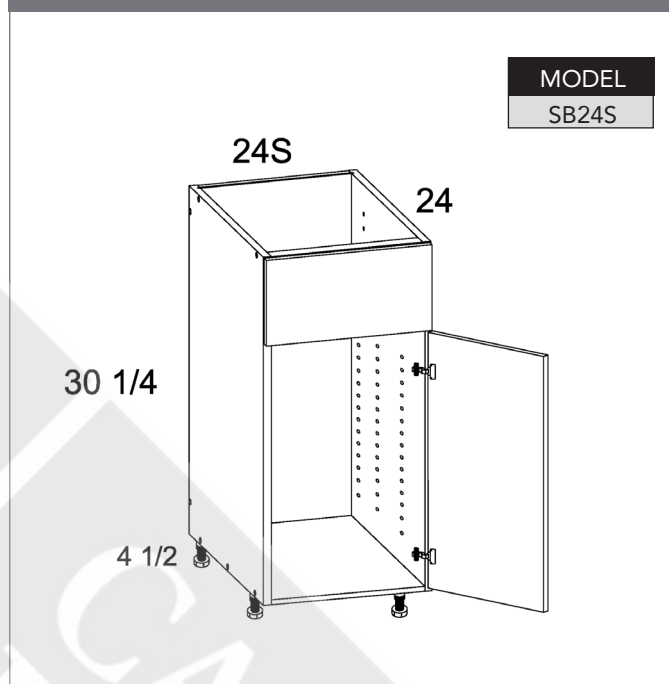
SB24SFH

PRODUCT SPECIFICATIONS

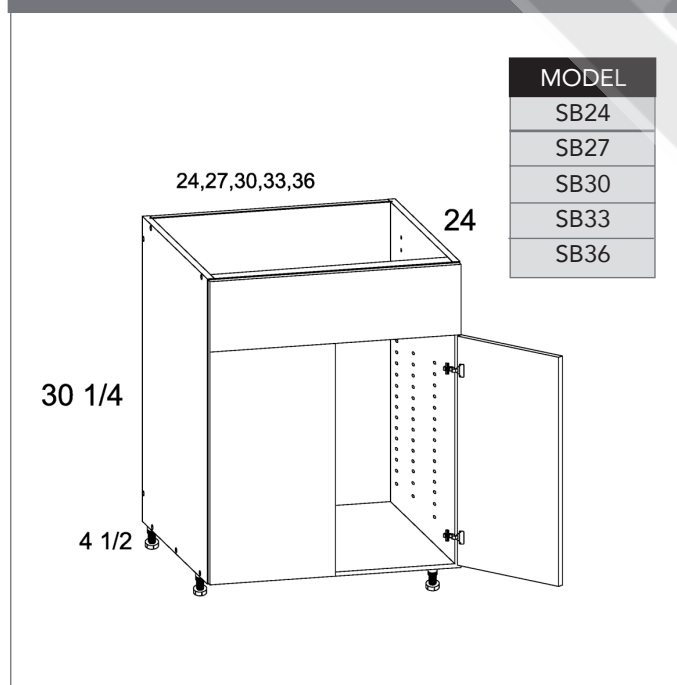
Full Height Two Door Sink Bases



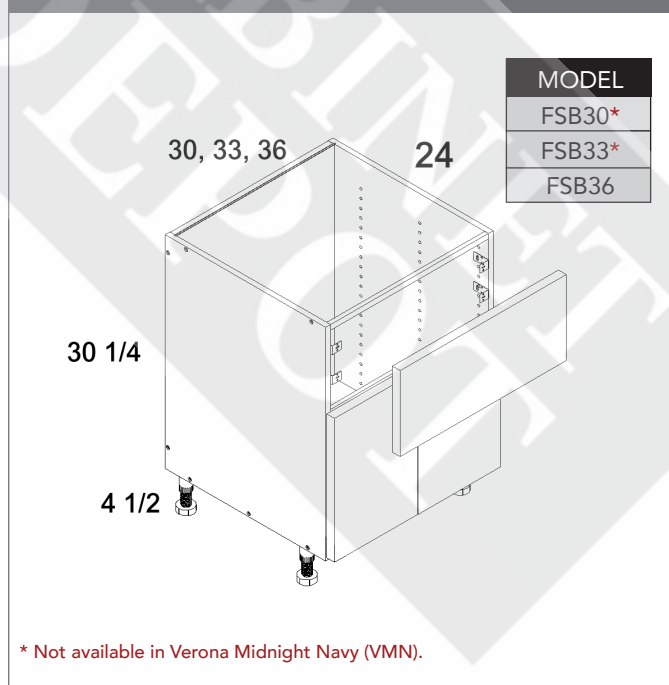
One Door with False Front Sink Bases



Two Door with False Front Sink Bases

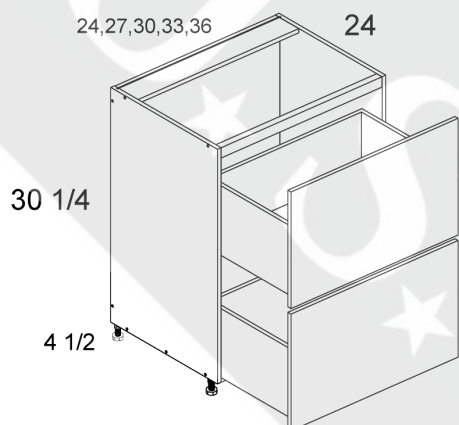


Farm Sink Bases



PRODUCT SPECIFICATIONS

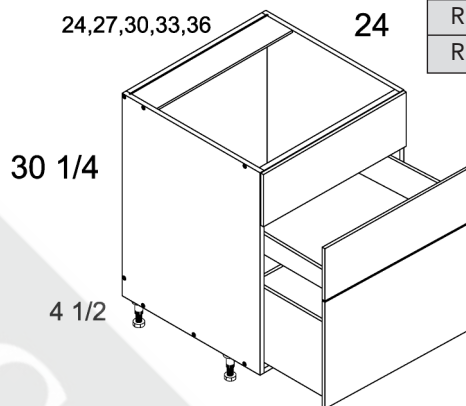
Two Drawer Range Bases



MODEL

RB2DB24
RB2DB27
RB2DB30
RB2DB33
RB2DB36

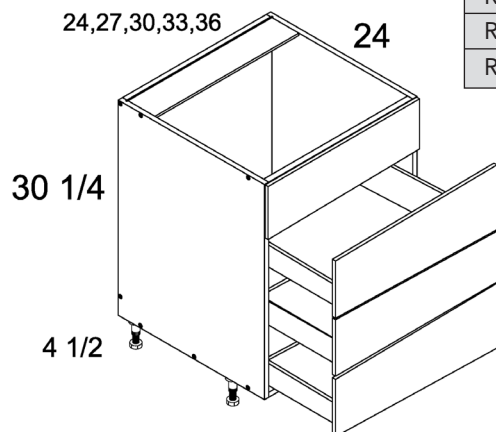
Two Drawer with False Front Range Bases



MODEL

RB3DB24
RB3DB27
RB3DB30
RB3DB33
RB3DB36

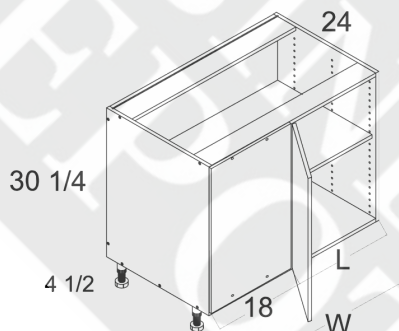
Three Drawer with False Front Range Bases



MODEL

RB4DB24
RB4DB27
RB4DB30
RB4DB33
RB4DB36

Full Height One Door Blind Bases



MODEL

BBC37/40FH*
BBC40/43FH*
BBC43/46FH*
BBC46/49FH*
BBC49/52SFH*

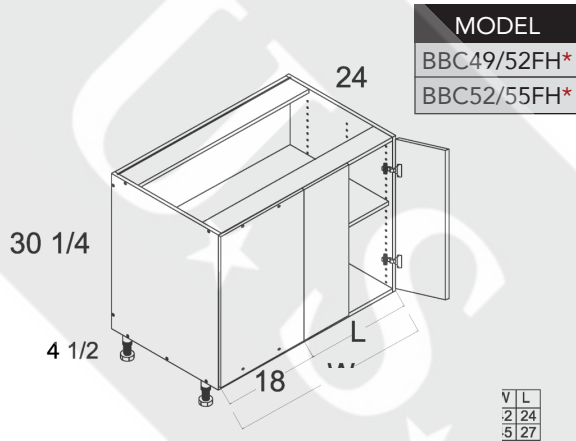
CABINET PULL CHART		
CABINET	MIN.	MAX.
BBC37/40FH	37	40
BBC40/43FH	40	43
BBC43/46FH	43	46
BBC46/49FH	46	49
BBC49/52SFH	49	52

CODE	W	L
BBC37/40FH	30	12
BBC40/43FH	33	15
BBC43/46FH	36	18
BBC46/49FH	36	21
BBC49/52FH	42	24

Filler required to join to adjacent cabinet (purchased separately).
*Not available in Verona Midnight Navy (VMN).

PRODUCT SPECIFICATIONS

Full Height Two Door Blind Bases



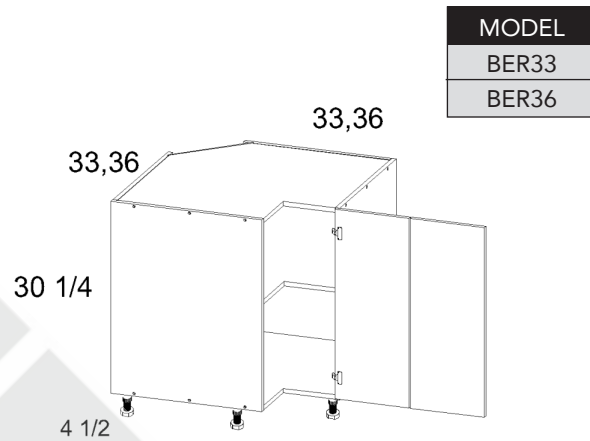
CABINET PULL CHART

CABINET	MIN.	MAX.	CODE	W	L
BBC49/52FH	49	52	BBC49/52	42	24
BBC52/55FH	52	55	BBC52/55	45	27

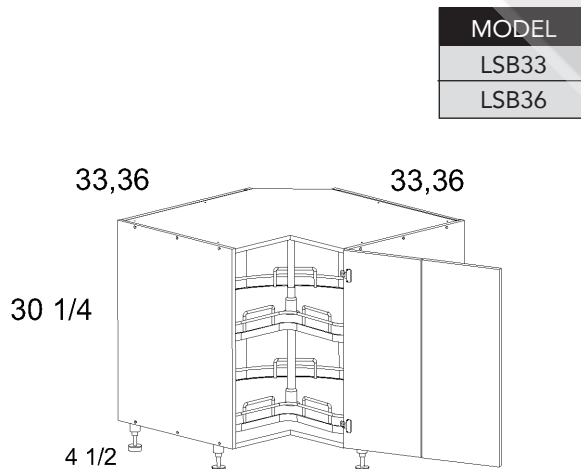
Filler required to join to adjacent cabinet (purchased separately).

*Not available in Verona Midnight Navy (VMN).

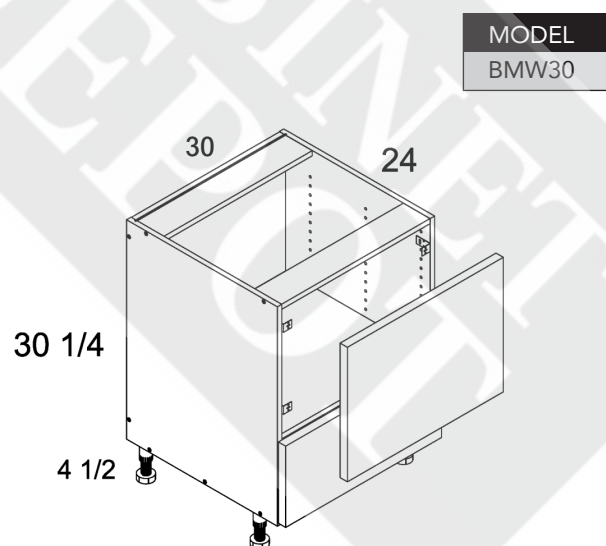
Base Easy Reach



Base Easy Reach with Lazy Susan Tray

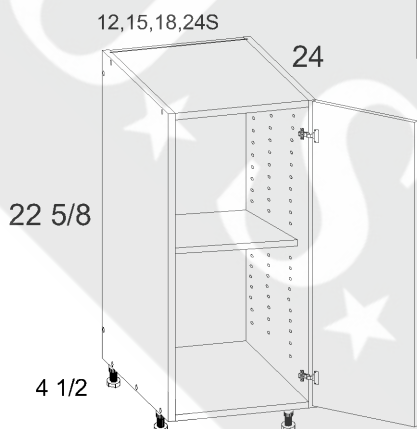


Microwave Bases



PRODUCT SPECIFICATIONS

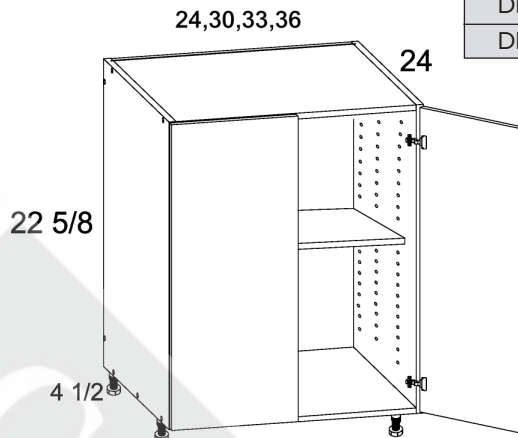
Full Height One Door Desk Bases



MODEL

DDO12
DDO15
DDO18
DDO24S

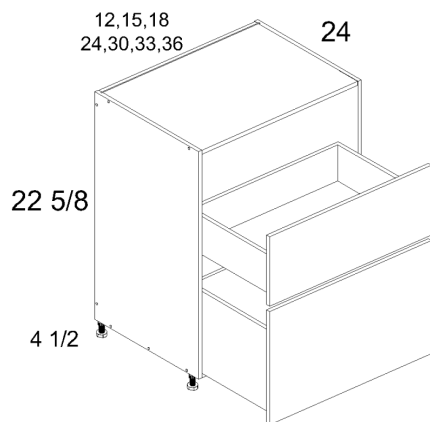
Full Height Two Door Desk Bases



MODEL

DDO24
DDO30
DDO33
DDO36

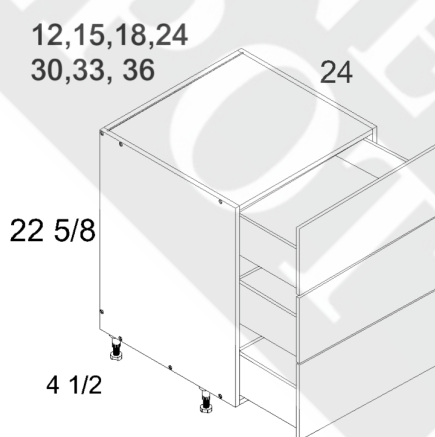
Two Drawer Desk Bases



MODEL

DDR2DB12
DDR2DB15
DDR2DB18
DDR2DB24
DDR2DB30
DDR2DB33
DDR2DB36

Three Drawer Desk Bases

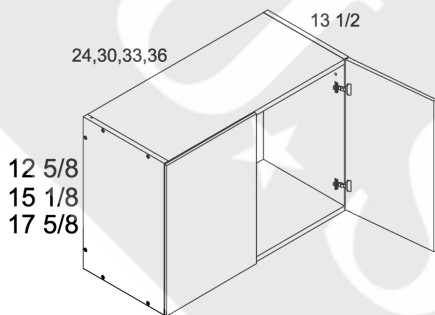


MODEL

DDR3DB12
DDR3DB15
DDR3DB18
DDR3DB24
DDR3DB30
DDR3DB33
DDR3DB36

PRODUCT SPECIFICATIONS

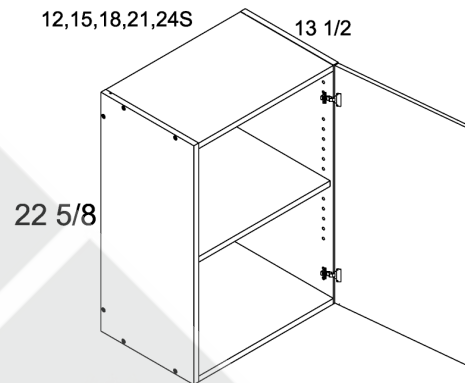
Two Door 13.5" Deep Stacker Wall Cabinets



MODEL
W2412*
W3012*
W3312*
W3612*
W2415*
W3015*
W3315*
W3615*
W2418*
W3018*
W3318*
W3618*

* Not available in Verona Midnight Navy (VMN).

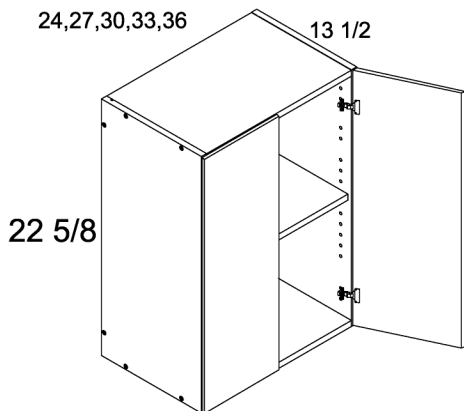
One Door 13.5" Deep Stacker Wall Cabinets



MODEL
W1223
W1523
W1823
W2123
W2423S

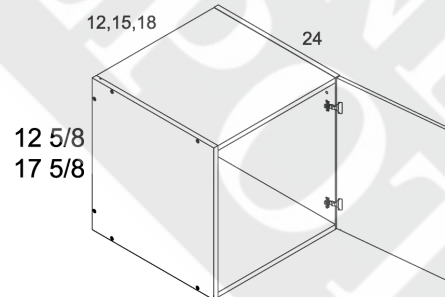
29

Two Door 13.5" Deep Stacker Wall Cabinets



MODEL
W2423
W2723
W3023
W3323
W3623

One Door 24" Deep Stacker Wall Cabinets

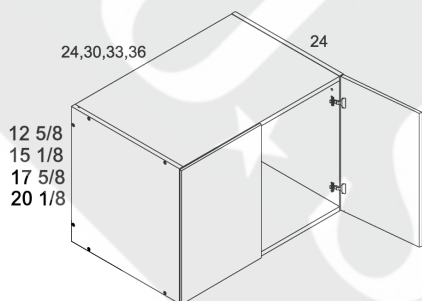


MODEL
W121224*
W151224*
W181224*
W121824*
W151824*
W181824*

* Not available in Verona Midnight Navy (VMN).

PRODUCT SPECIFICATIONS

Two Door 24" Deep Stacker Wall Cabinets

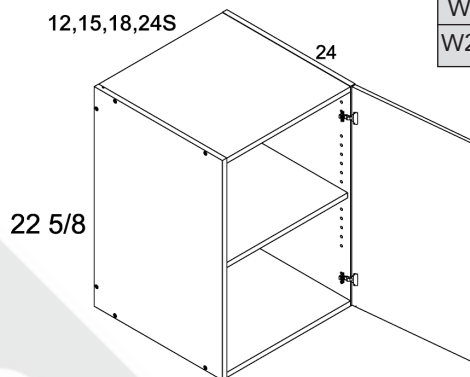


MODEL

W241224*
W301224*
W331224*
W361224*
W361524*
W241824*
W301824*
W331824*
W361824*
W362024*

* Not available in Verona Midnight Navy (VMN).

One Door 24" Deep Stacker Wall Cabinets

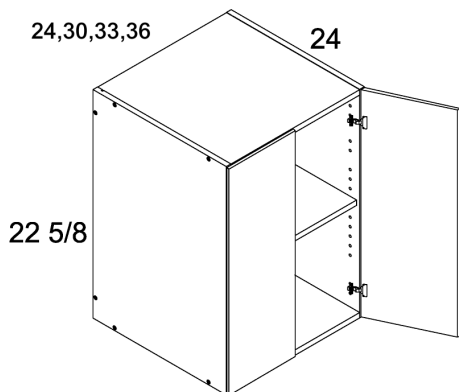


MODEL

W122324*
W152324*
W182324*
W242324S*

* Not available in Verona Midnight Navy (VMN).

Two Door 24" Deep Stacker Wall Cabinets

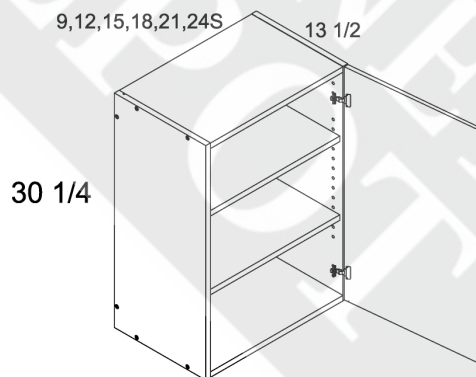


MODEL

W242324*
W302324*
W332324*
W362324*

* Not available in Verona Midnight Navy (VMN).

One Door 30" High Wall Cabinets

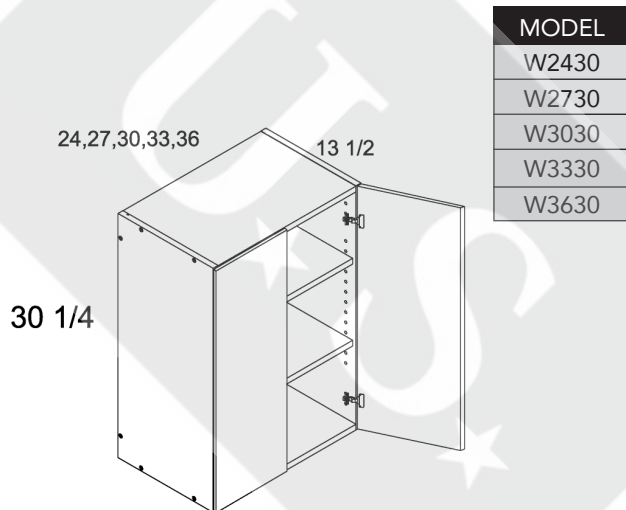


MODEL

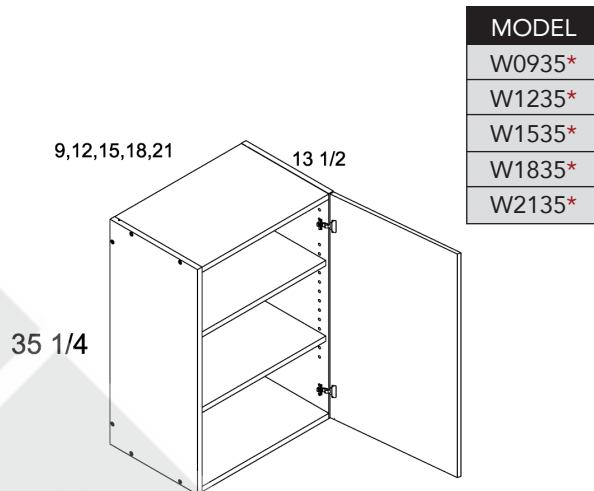
W0930
W1230
W1530
W1830
W2130
W2430S

PRODUCT SPECIFICATIONS

Two Door 30" High Wall Cabinets

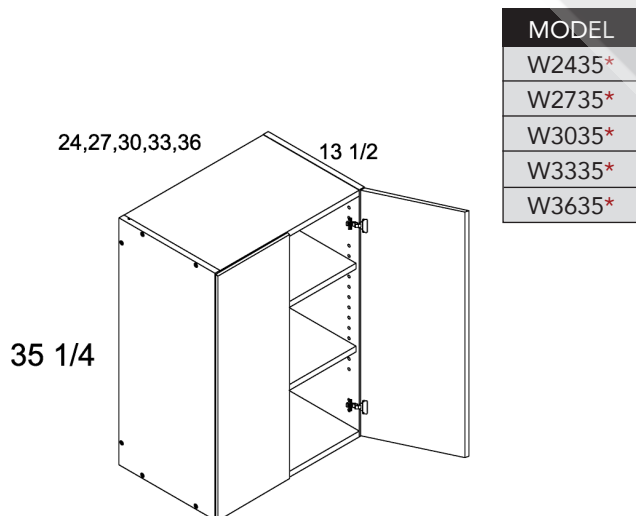


One Door 35" High Wall Cabinets



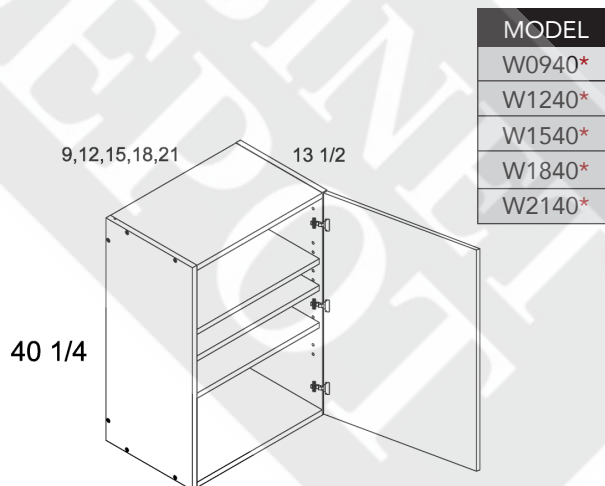
* Not available in Verona Midnight Navy (VMN).

Two Door 35" High Wall Cabinets



* Not available in Verona Midnight Navy (VMN).

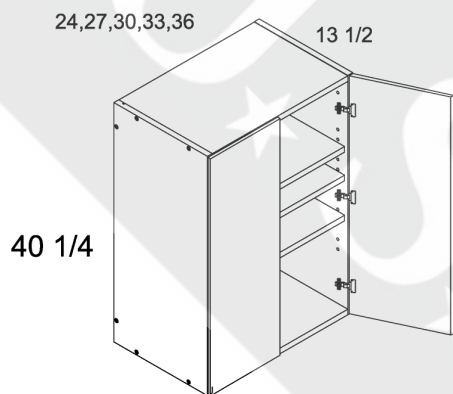
One Door 40" High Wall Cabinets



* Not available in Verona Midnight Navy (VMN).

PRODUCT SPECIFICATIONS

Two Door 40" High Wall Cabinets



MODEL

W2440*

W2740*

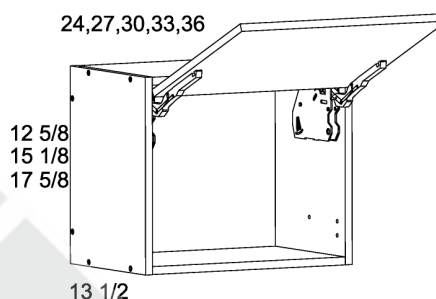
W3040*

W3340*

W3640*

* Not available in Verona Midnight Navy (VMN).

13.5" Deep Flip Up Wall Cabinets



MODEL

WFD2412*

WFD2712*

WFD3012*

WFD3312*

WFD3612*

WFD2415*

WFD2715*

WFD3015*

WFD3315*

WFD3615*

WFD2418*

WFD2718*

WFD3018*

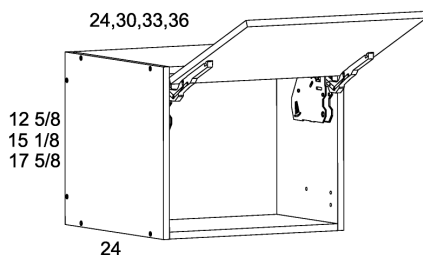
WFD3318*

WFD3618*

* Not available in Verona Midnight Navy (VMN).

WFD cabinets utilize Blum Aventos Hardware and include -BLUM at the end of the SKU.

24" Deep Flip Up Wall Cabinets



MODEL

WFD241224*

WFD241824*

WFD301224*

WFD301824*

WFD331224*

WFD331824*

WFD361224*

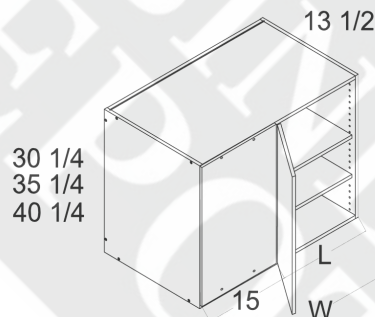
WFD361524*

WFD361824*

* Not available in Verona Midnight Navy (VMN).

WFD cabinets utilize Blum Aventos HK Hardware and include -BLUM at the end of the SKU.

Wall Blind Corner Cabinets



MODEL

WBC24/2730*

WBC27/3030*

WBC30/3330*

WBC33/3630*

WBC36/3930*

WBC24/2735*

WBC27/3035*

WBC30/3335*

WBC33/3635*

WBC36/3935*

WBC24/2740*

WBC27/3040*

WBC30/3340*

WBC33/3640*

WBC36/3940*

Filler required to join to adjacent cabinet (purchased separately).

* Not available in Verona Midnight Navy (VMN).

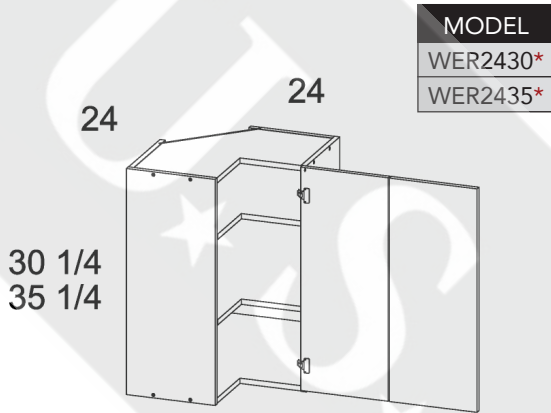
CABINET PULL CHART

CABINET	MIN.	MAX.
WBC24/27	24	27
WBC27/30	27	30
WBC30/33	30	33
WBC33/36	33	36
WBC36/39	36	39

CODE	W	L
WBC24/27	24	9
WBC27/30	27	12
WBC30/33	30	15
WBC33/36	33	18
WBC36/39	36	21

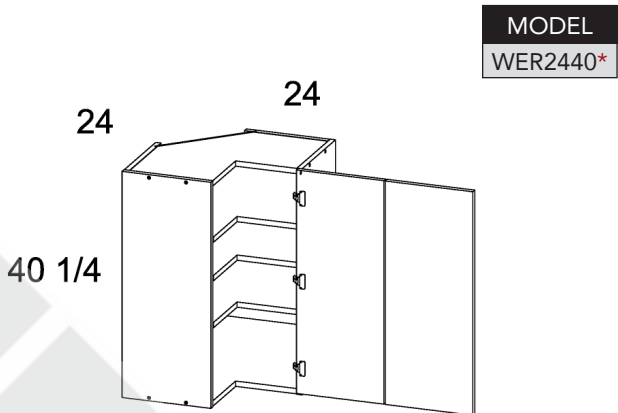
PRODUCT SPECIFICATIONS

Wall Easy Reach Corner Cabinets



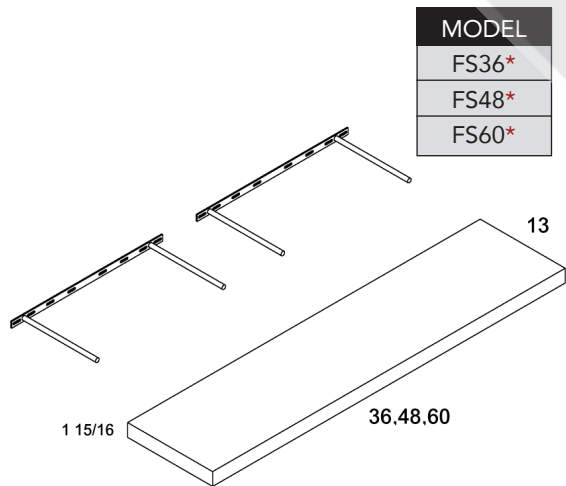
* Not available in Verona Midnight Navy (VMN).

Wall Easy Reach Corner Cabinets



* Not available in Verona Midnight Navy (VMN).

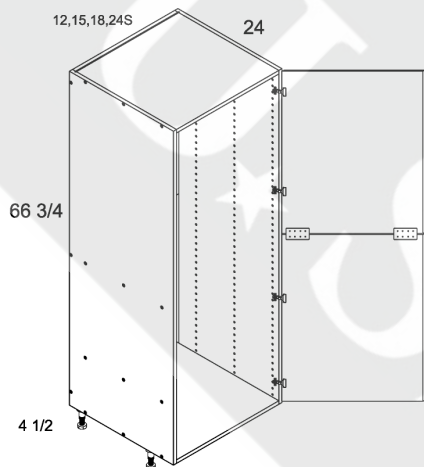
Specialty Walls - Floating Shelves



36"W Floating Shelf only has one mounting bracket.
Recommended Max Weight: 25 lbs
* Not available in Verona Midnight Navy (VMN).

PRODUCT SPECIFICATIONS

Tall Two Door Open Utility



MODEL

T1272*

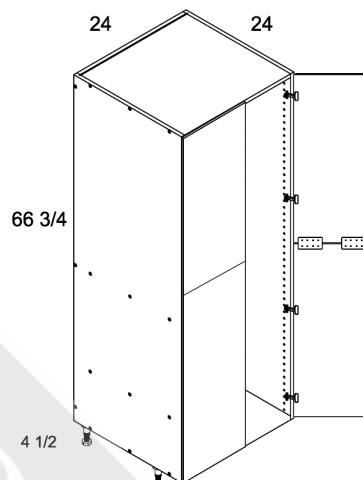
T1572*

T1872*

T2472S*

* Not available in Verona Midnight Navy (VMN).

Tall Four Door Open Utility

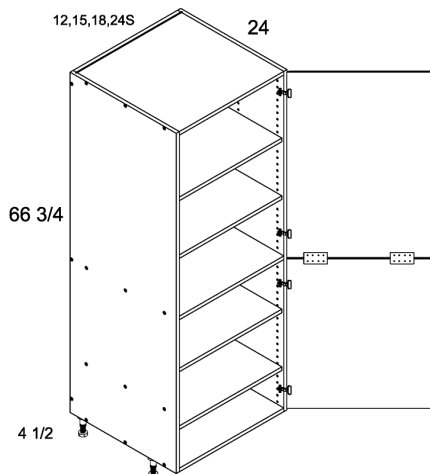


MODEL

T2472*

* Not available in Verona Midnight Navy (VMN).

Tall Two Door Utility with Shelves



MODEL

TB1272FH*

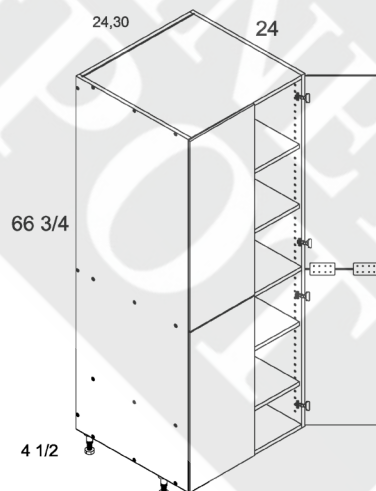
TB1572FH*

TB1872FH*

TB2472SFH*

* Not available in Verona Midnight Navy (VMN).

Tall Four Door Utility with Shelves



MODEL

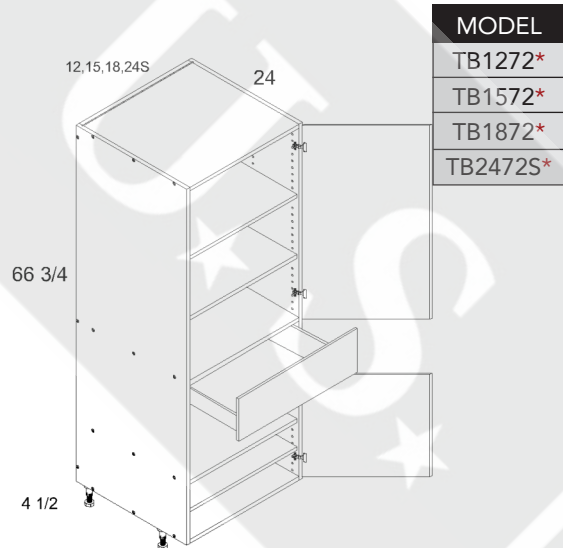
TB2472FH*

TB3072FH*

* Not available in Verona Midnight Navy (VMN).

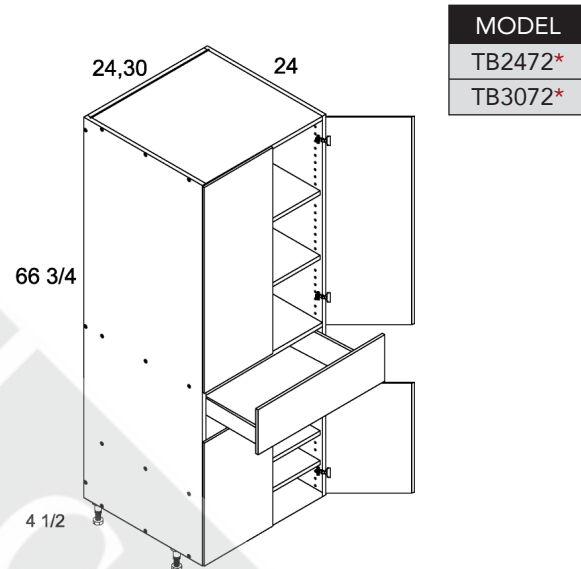
PRODUCT SPECIFICATIONS

Tall Two Door One Drawer Utility



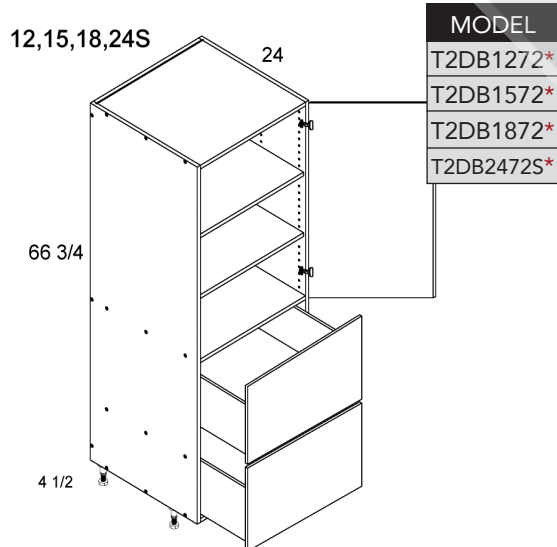
* Not available in Verona Midnight Navy (VMN).

Tall Four Door One Drawer Utility



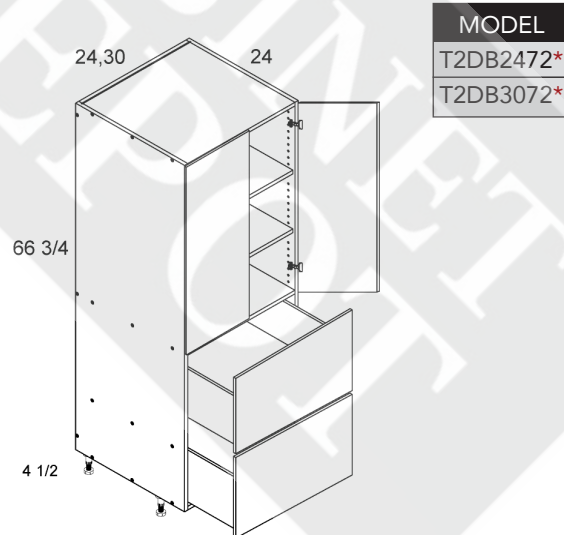
* Not available in Verona Midnight Navy (VMN).

Tall One Door Two Drawer Utility



* Not available in Verona Midnight Navy (VMN).

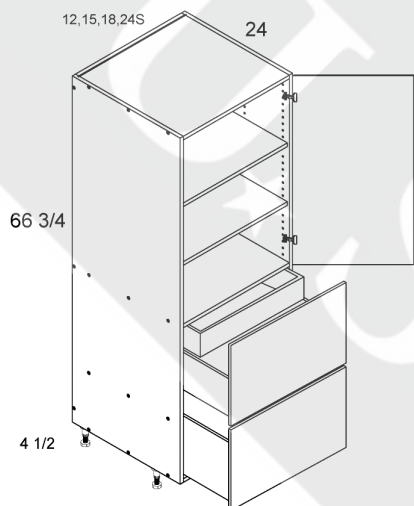
Tall Two Door Two Drawer Utility



* Not available in Verona Midnight Navy (VMN).

PRODUCT SPECIFICATIONS

Tall One Door Two Drawer with One Inner Drawer Utility

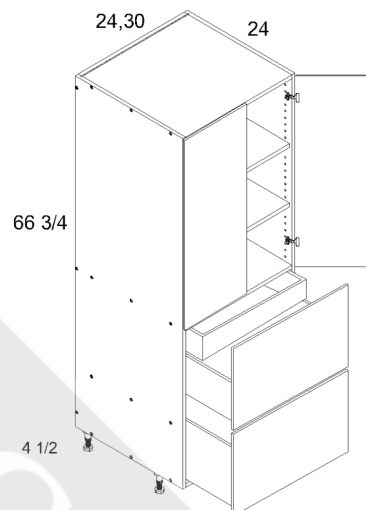


* Not available in Verona Midnight Navy (VMN).

MODEL

T2DBID1272*
T2DBID1572*
T2DBID1872*
T2DBID2472S*

Tall Two Door Two Drawer with One Inner Drawer Utility

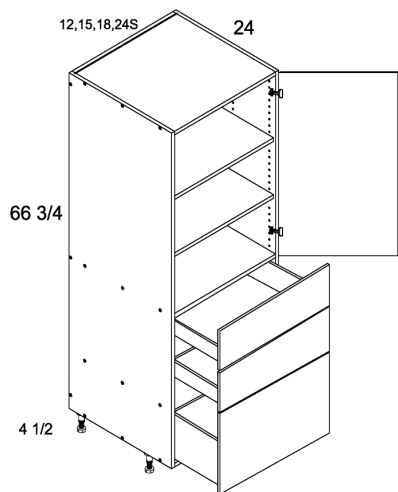


* Not available in Verona Midnight Navy (VMN).

MODEL

T2DBID2472*
T2DBID3072*

Tall One Door Three Drawer Utility

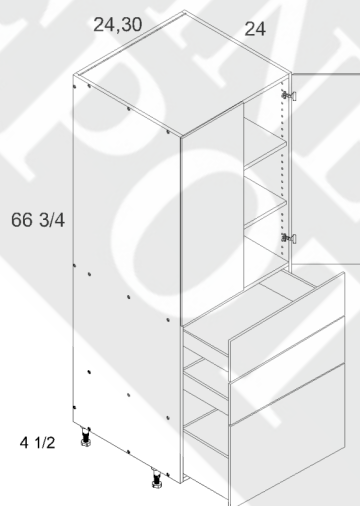


* Not available in Verona Midnight Navy (VMN).

MODEL

T3DB1272*
T3DB1572*
T3DB1872*
T3DB2472S*

Tall Two Door Three Drawer Utility



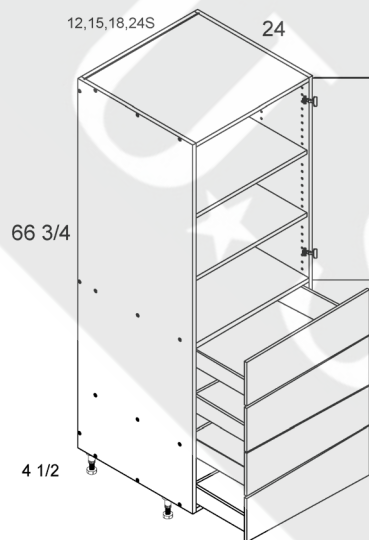
* Not available in Verona Midnight Navy (VMN).

MODEL

T3DB2472*
T3DB3072*

PRODUCT SPECIFICATIONS

Tall One Door Four Drawer Utility

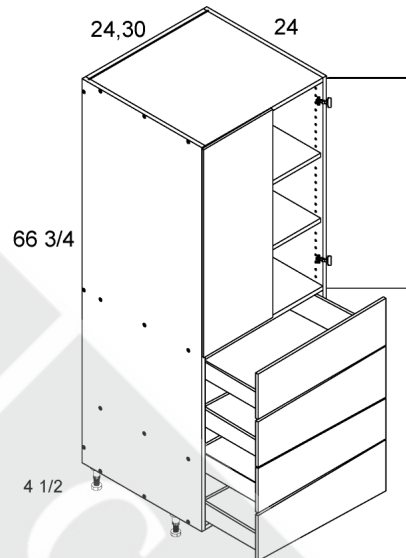


MODEL

T4DB1272*
T4DB1572*
T4DB1872*
T4DB2472S*

* Not available in Verona Midnight Navy (VMN).

Tall Two Door Four Drawer Utility

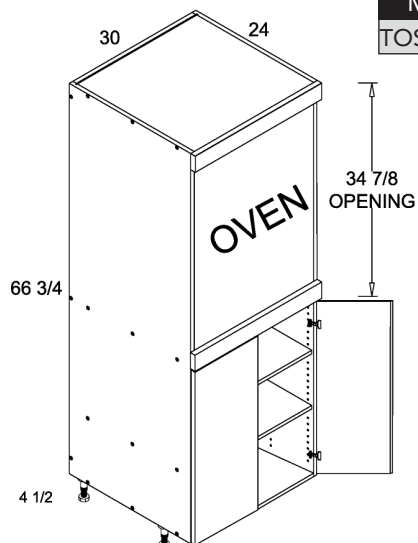


MODEL

T4DB2472*
T4DB3072*

* Not available in Verona Midnight Navy (VMN).

Tall Single Oven Full Height Two Door Utility

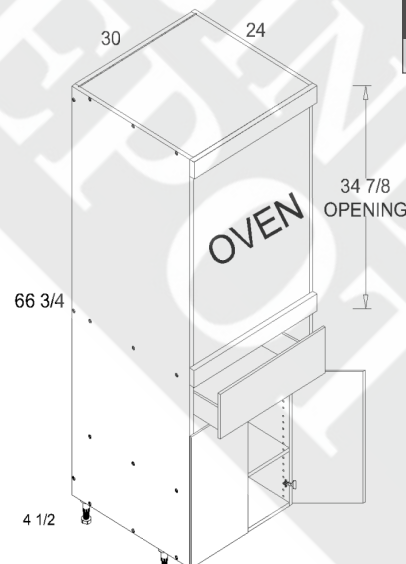


MODEL

TOS3072FH*

* Not available in Verona Midnight Navy (VMN).

Tall Single Oven Two Door One Drawer Utility



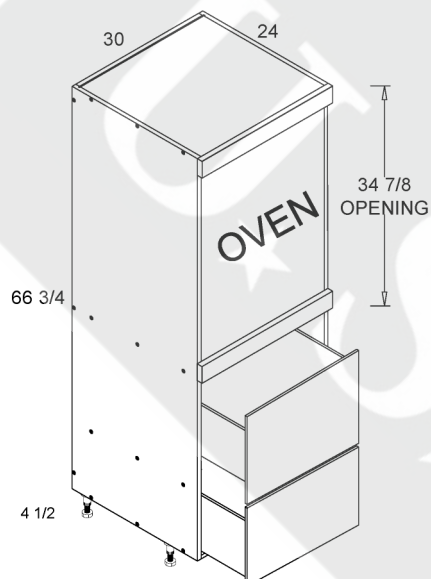
MODEL

TOSB3072*

* Not available in Verona Midnight Navy (VMN).

PRODUCT SPECIFICATIONS

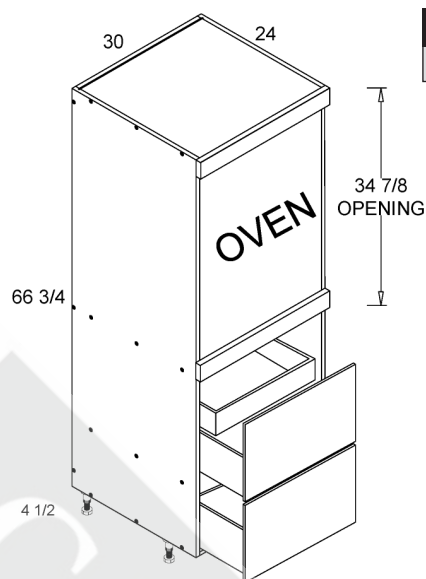
Tall Single Oven Two Drawer Utility



MODEL
TOS2DB3072*

* Not available in Verona Midnight Navy (VMN).

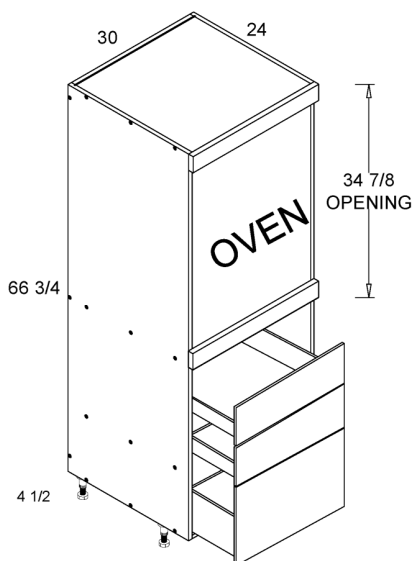
Tall Single Oven Two Drawer with One Inner Drawer Utility



MODEL
TOS2DBID3072*

* Not available in Verona Midnight Navy (VMN).

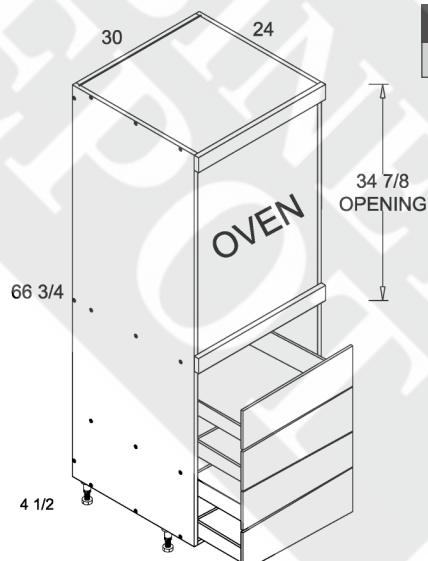
Tall Single Oven Three Drawer Utility



MODEL
TOS3DB3072*

* Not available in Verona Midnight Navy (VMN).

Tall Single Oven Four Drawer Utility

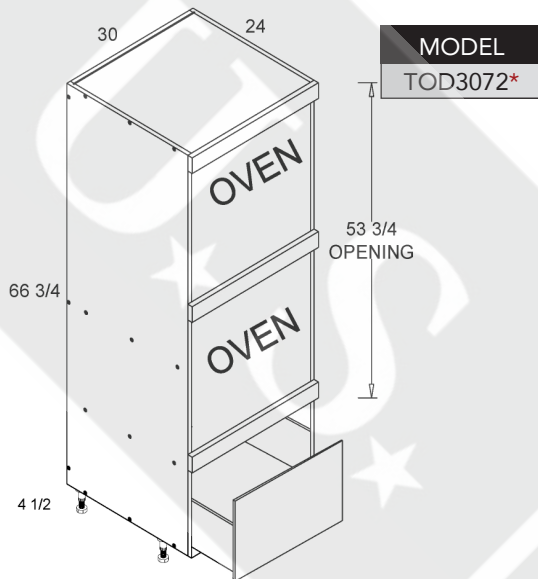


MODEL
TOS4DB3072*

* Not available in Verona Midnight Navy (VMN).

PRODUCT SPECIFICATIONS

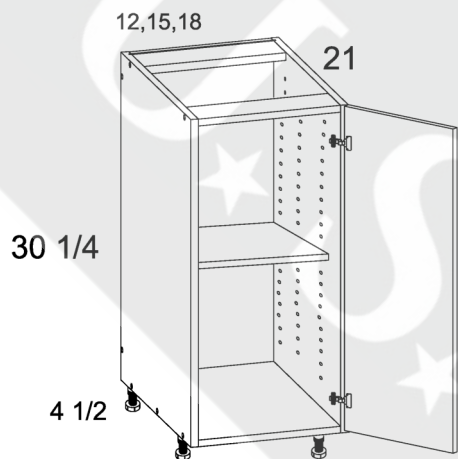
Tall Double Oven One Drawer Utility



* Not available in Verona Midnight Navy (VMN).

PRODUCT SPECIFICATIONS

Full Height One Door Vanity Bases



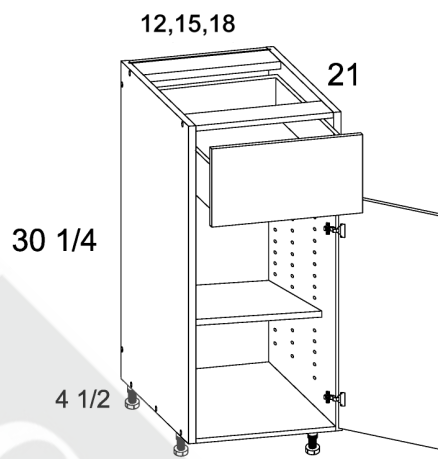
MODEL

VB12FH

VB15FH

VB18FH

One Door One Drawer Vanity Bases



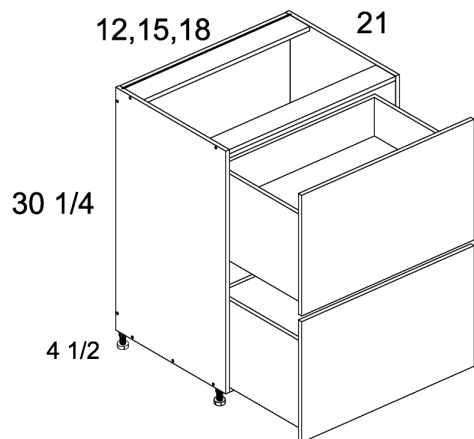
MODEL

VB12

VB15

VB18

Two Drawer Vanity Bases



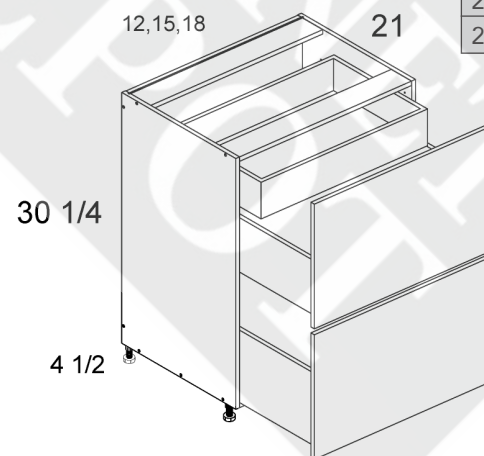
MODEL

2VDB12

2VDB15

2VDB18

Two Drawer with One Inner Drawer Vanity Bases



MODEL

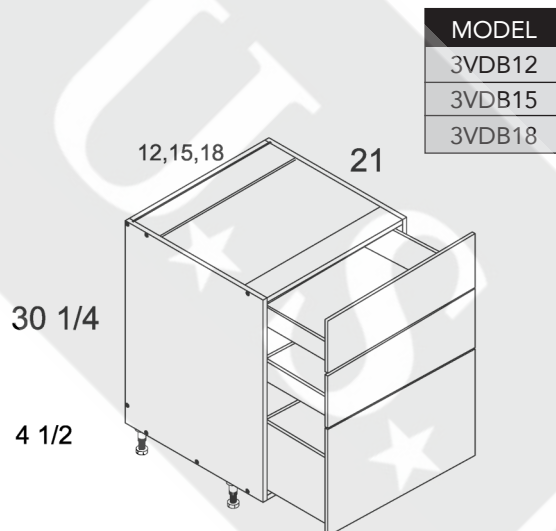
2VDBID12

2VDBID15

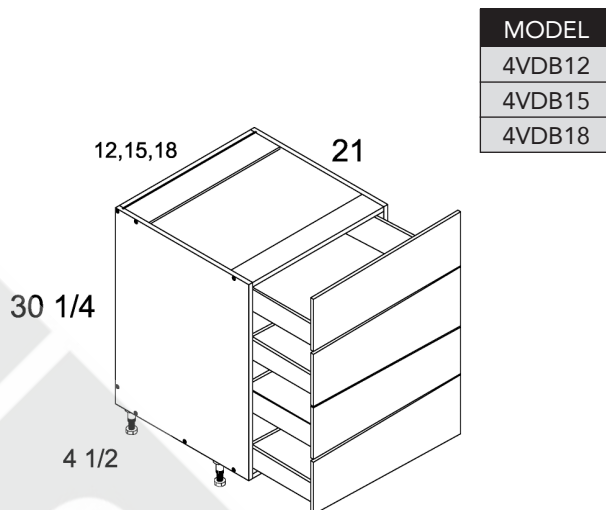
2VDBID18

PRODUCT SPECIFICATIONS

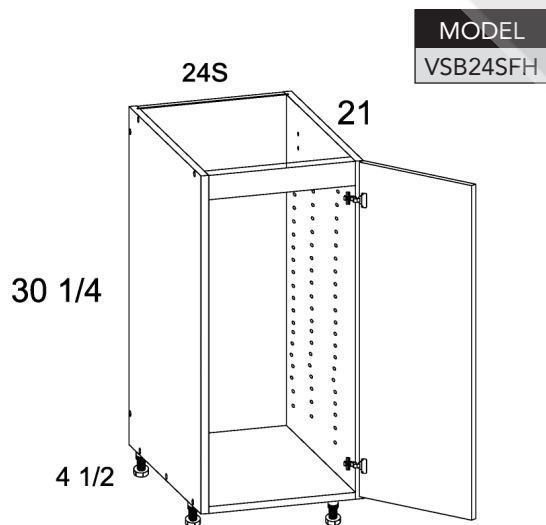
Three Drawer Vanity Bases



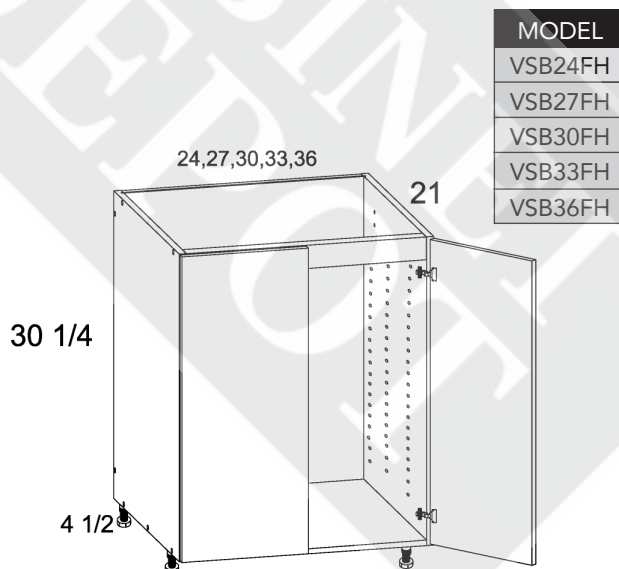
Four Drawer Vanity Bases



Full Height One Door Vanity Sink Bases

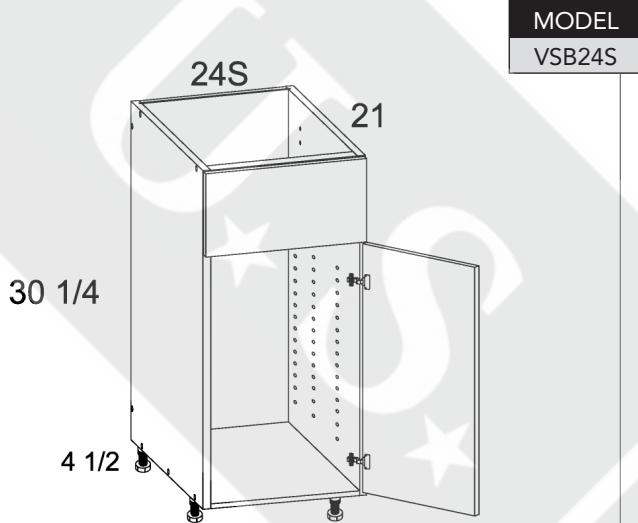


Full Height Double Door Vanity Sink Bases

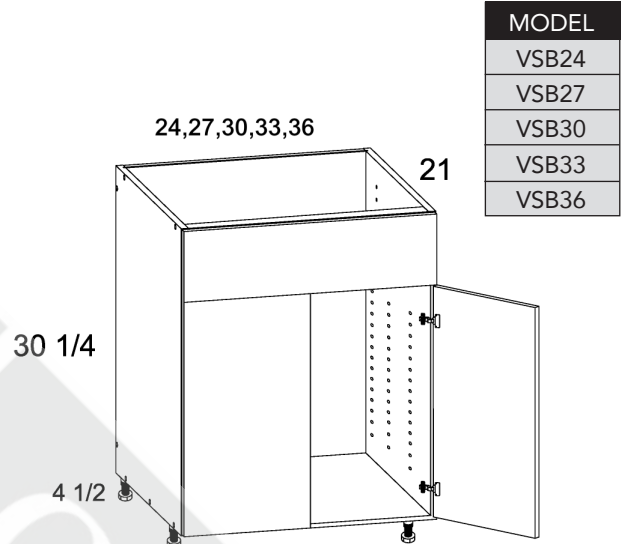


PRODUCT SPECIFICATIONS

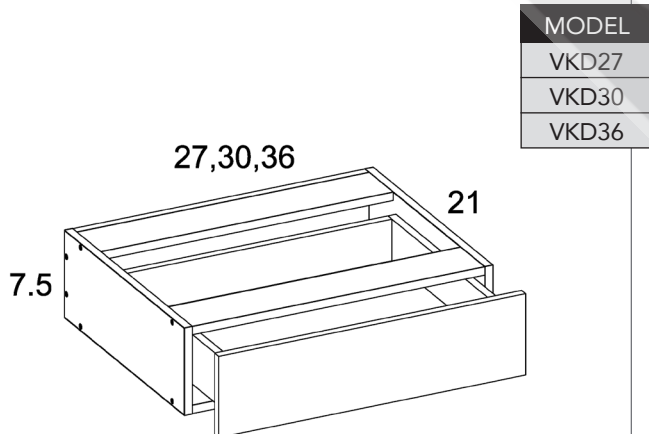
Vanity Sink Base False Front One Door



Vanity Sink Base False Front Two Door

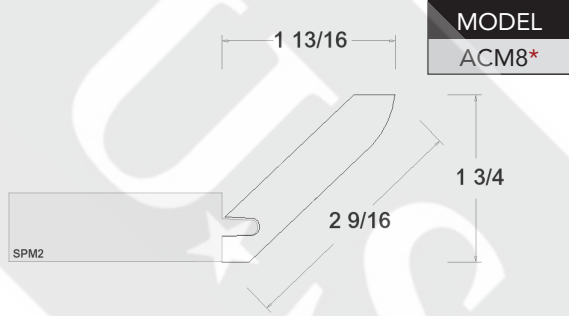


Vanity Knee Drawers



PRODUCT SPECIFICATIONS

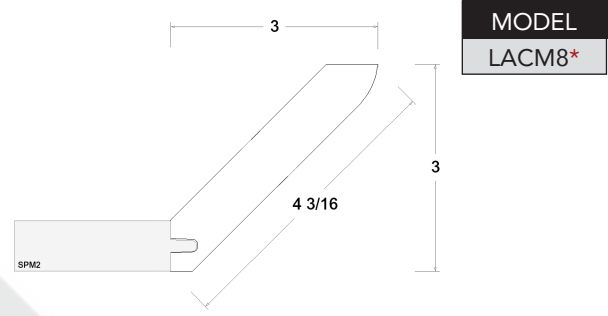
1 3/4" Angle Crown Moulding



MODEL
ACM8*

- Support Moulding (SMP2) required to secure to the cabinet.
- Available in Verona style only (*Not available in Midnight Navy (VMN)).

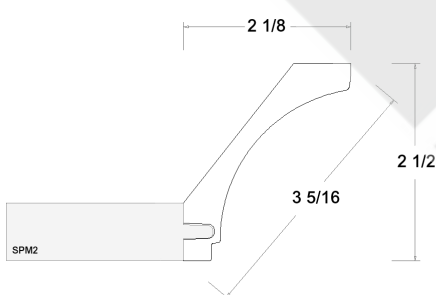
3" Angle Crown Moulding



MODEL
LACM8*

- Support Moulding (SMP2) required to secure to the cabinet.
- Available in Verona style only (*Not available in Midnight Navy (VMN)).

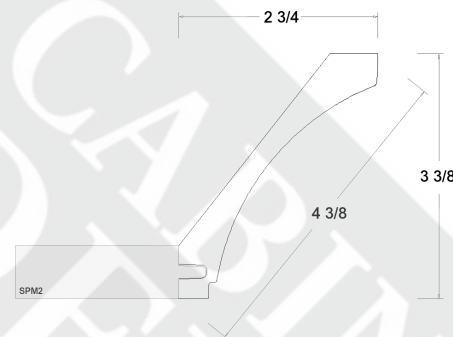
2 1/2" Cove Crown Moulding



MODEL
MCVE8*

- Support Moulding (SMP2) required to secure to the cabinet.
- Available in Verona style only (*Not available in Midnight Navy (VMN)).

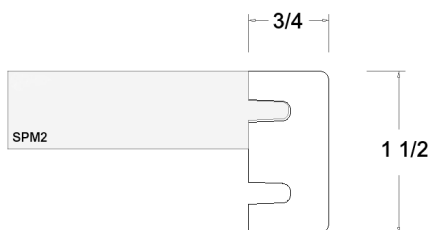
3 3/8" Cove Crown Moulding



MODEL
LCVE8*

- Support Moulding (SMP2) required to secure to the cabinet.
- Available in Verona style only (*Not available in Midnight Navy (VMN)).

1 1/2" Light Rail Moulding



MODEL
MPF1*

- Support Moulding (SMP2) required to secure to the cabinet.
- Available in Verona style only (*Not available in Midnight Navy (VMN)).

6" Crown Extension Moulding

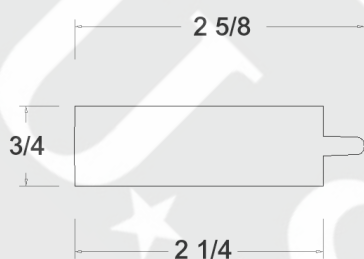


MODEL
MPF6*

- Support Moulding (SMP2) required to secure to the cabinet.
- Available in Verona style only (*Not available in Midnight Navy (VMN)).

PRODUCT SPECIFICATIONS

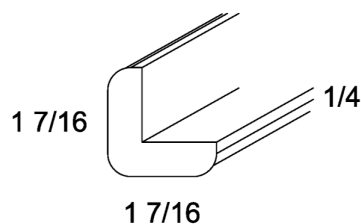
Support Moulding



MODEL
SPM2*

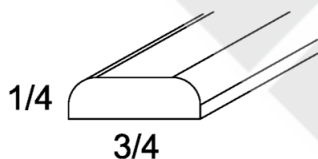
- Required for use with all crown mouldings to secure to the cabinet.
- Available in Verona style only (*Not available in Midnight Navy (VMN)).

Outside Corner Moulding



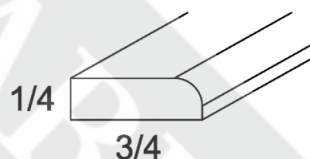
MODEL
OCM8

Batten Moulding



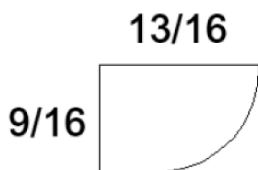
MODEL
BM8

Scribe Moulding



MODEL
SM8

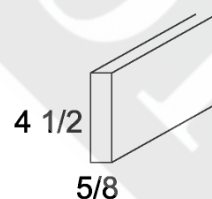
Shoe Moulding



MODEL
SHM8

- Available in Verona style only.

Toe Kick Cover

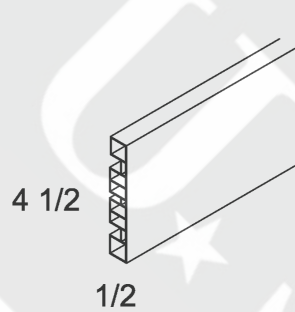


MODEL
TKC

- Edgebanded on all four edges
- Matching Laminate Face

PRODUCT SPECIFICATIONS

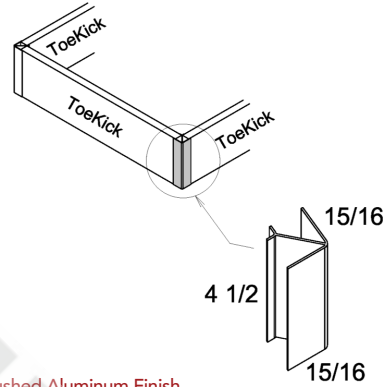
Brushed Aluminum PVC Toe Kick Cover



MODEL
TKC-PVC

• Brushed Aluminum Finish

PVC Toe Kick Corner Connector



MODEL
CORNER-PVC

• Brushed Aluminum Finish

Furniture Base Moulding



MODEL
FBM8

• Available in Verona style only.

PRODUCT SPECIFICATIONS

Fillers - Appliance Filler (Three Pack)

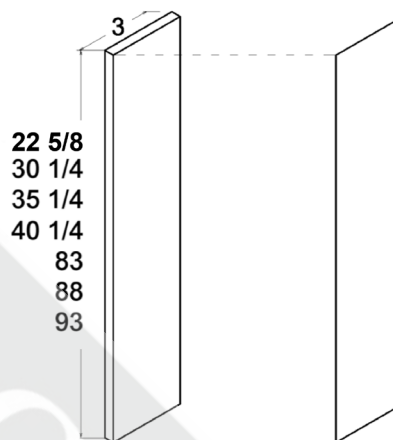


MODEL
AF3006*

• Edgebanded on all four edges

* Not available in Verona Midnight Navy (VMN).

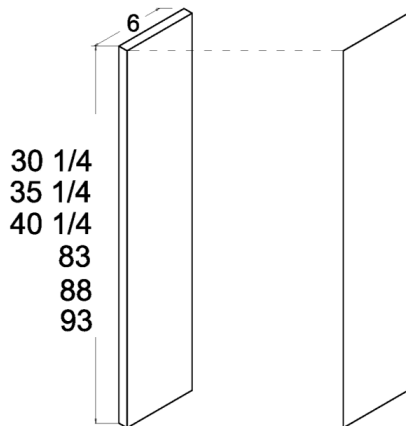
Fillers - 3" Filler Overlays



MODEL
OF323
OF330
OF335*
OF340*
OF384*
OF389*
OF394*

* Not available in Verona Midnight Navy (VMN).

Fillers - 6" Filler Overlays



MODEL
OF630
OF635*
OF640*
OF684*
OF689*
OF694*

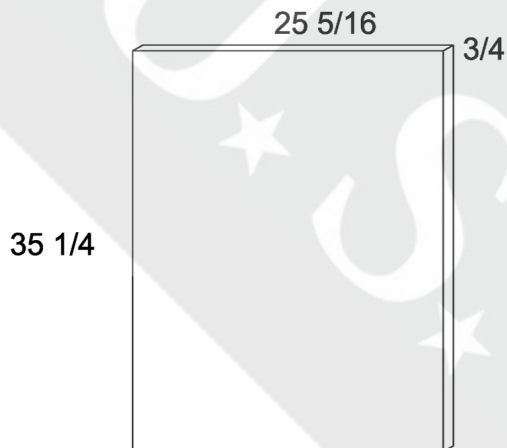
* Not available in Verona Midnight Navy (VMN).

PRODUCT SPECIFICATIONS

Panels - Base End Panel

MODEL

BEP2535



- Edgebanded on all four edges

* Not available in Verona Midnight Navy (VMN).

Panels - Wall End Panel

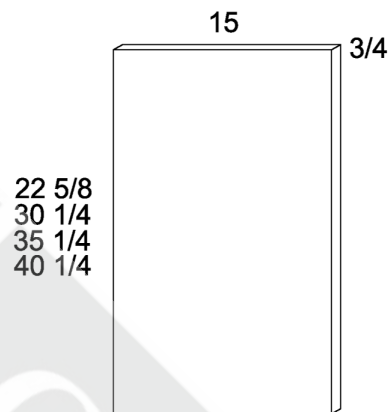
MODEL

WEP1523

WEP1530*

WEP1535*

WEP1540*



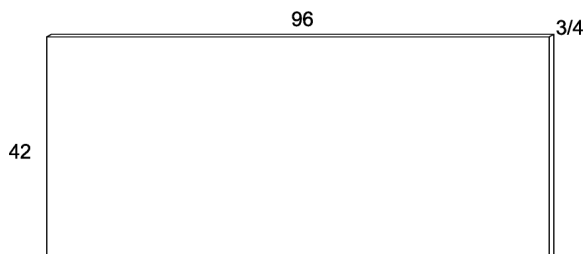
- Edgebanded on all four edges

* Not available in Verona Midnight Navy (VMN).

Panels - Long End Panel

MODEL

BP9642

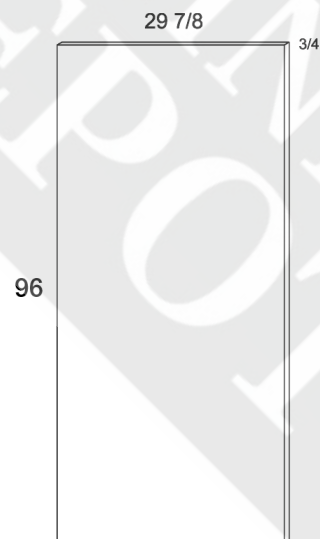


- Edgebanded on all four edges

Panels - Tall End Panel

MODEL

TEP3096*



- Edgebanded on all four edges

* Not available in Verona Midnight Navy (VMN).

PRODUCT SPECIFICATIONS

